

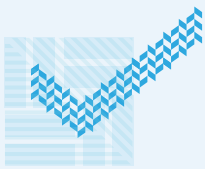
Yavu Checklist



This checklist is a great tool to help you quickly remember the four Yavu principles and the questions you need to ask each time you engage with a Pacific community.

1

Know who Pacific peoples are



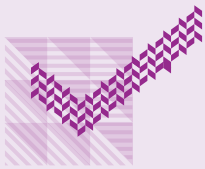
Have you gathered the characteristics, needs and aspirations of your Pacific audience?

Do you understand the cultural issues in relation to the community group or stakeholder you want to engage?

Do you understand the cultural protocols and obligations? If not, seek advice before you engage – be prepared.

2

Make time to connect



Engage with respect, compassion and humility.

Consider how your own social identities and experiences influence your understanding of your audience and how it may impact your contribution.

3

Recognise Pacific peoples' contribution



Have you included all voices and diversity; young people, gender, professionals, people with disabilities, the elderly, Rainbow+ community etc. Be sure to capture their voice.

Choose culturally appropriate channels and methods of engagement to capture all voices – seek advice from Pacific experts and advisors to support you.

4

Build, nurture and strengthen relationships



Share how information received will be recorded, analysed and agree when you will provide feedback on the outcomes of the engagement.

Reflect and ask: What did I learn?
How did the experience challenge what I thought I knew?
What do I need to learn more about?

Evaluate processes with your colleagues and stakeholders to build your Pacific networks and contacts. Remember that these will be ongoing reciprocal relationships – 'Teu le va'.