



Ministry for
**Pacific
Peoples**

Te Manatū mō ngā Iwi ō te Moana-nui-ā-Kiwa



Pacific Wellbeing Talanoa



Pure

Reverend Fele Nokise



Opening Address

Laulu Mac Leauanae

Secretary for Pacific Peoples
Chief Executive for Ministry for Pacific Peoples



Introduction and Housekeeping

- Introduction to Pacific Wellbeing Strategy
- Talanoa Series and Fono Objectives



Lelani Unasa

Director of Policy
Ministry for Pacific Peoples





Pacific Wellbeing Talanoa



*E vave taunu'u le malaga pe a
tatou alo va'a fa'atasi*

*Our journey makers will arrive at
our destination faster, if we paddle
our va'a together*



Lalanga Fou



**We are confident in our endeavours, we
are a thriving, resilient and prosperous
Pacific Aotearoa**





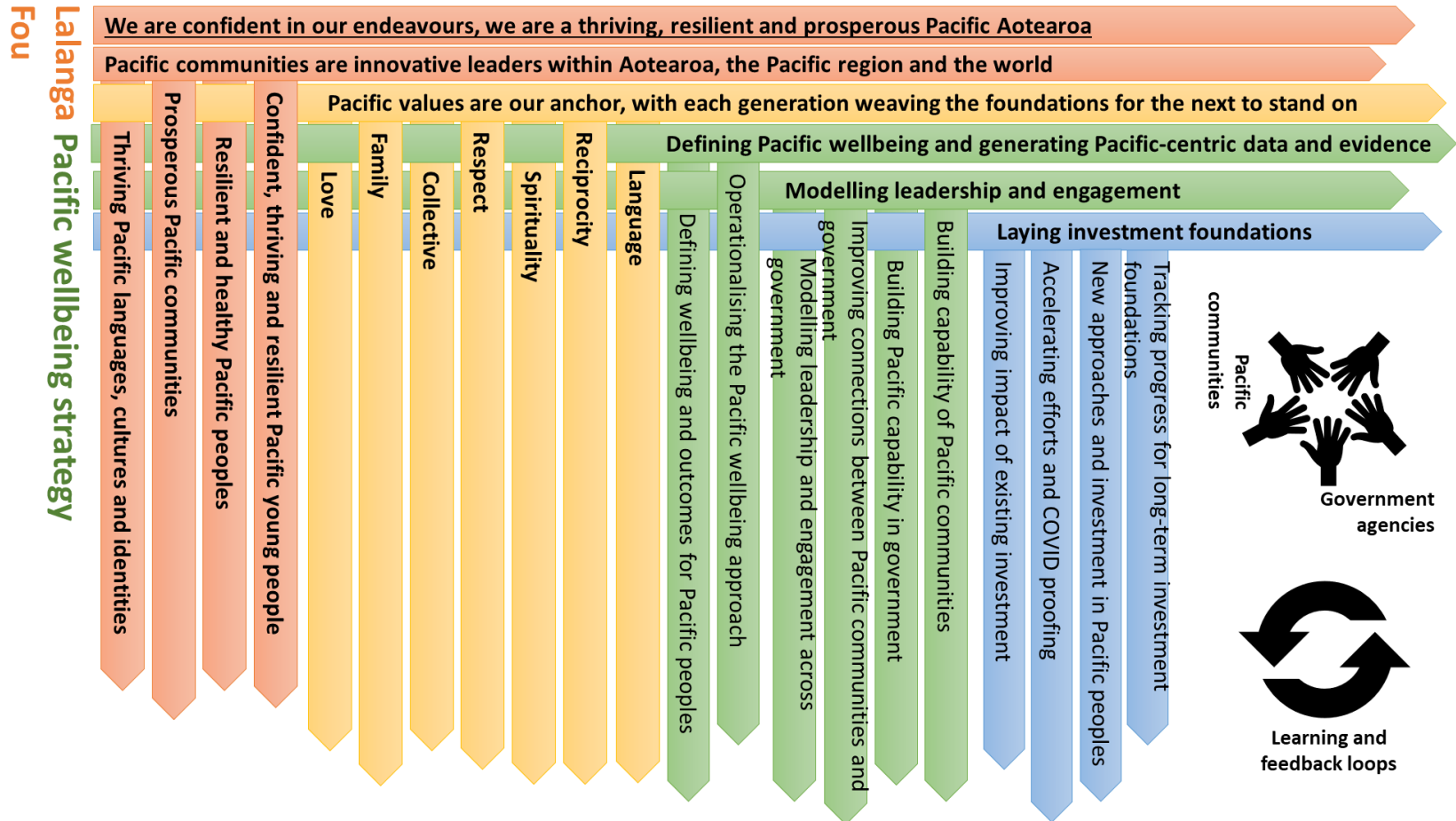
Pacific Wellbeing Strategy



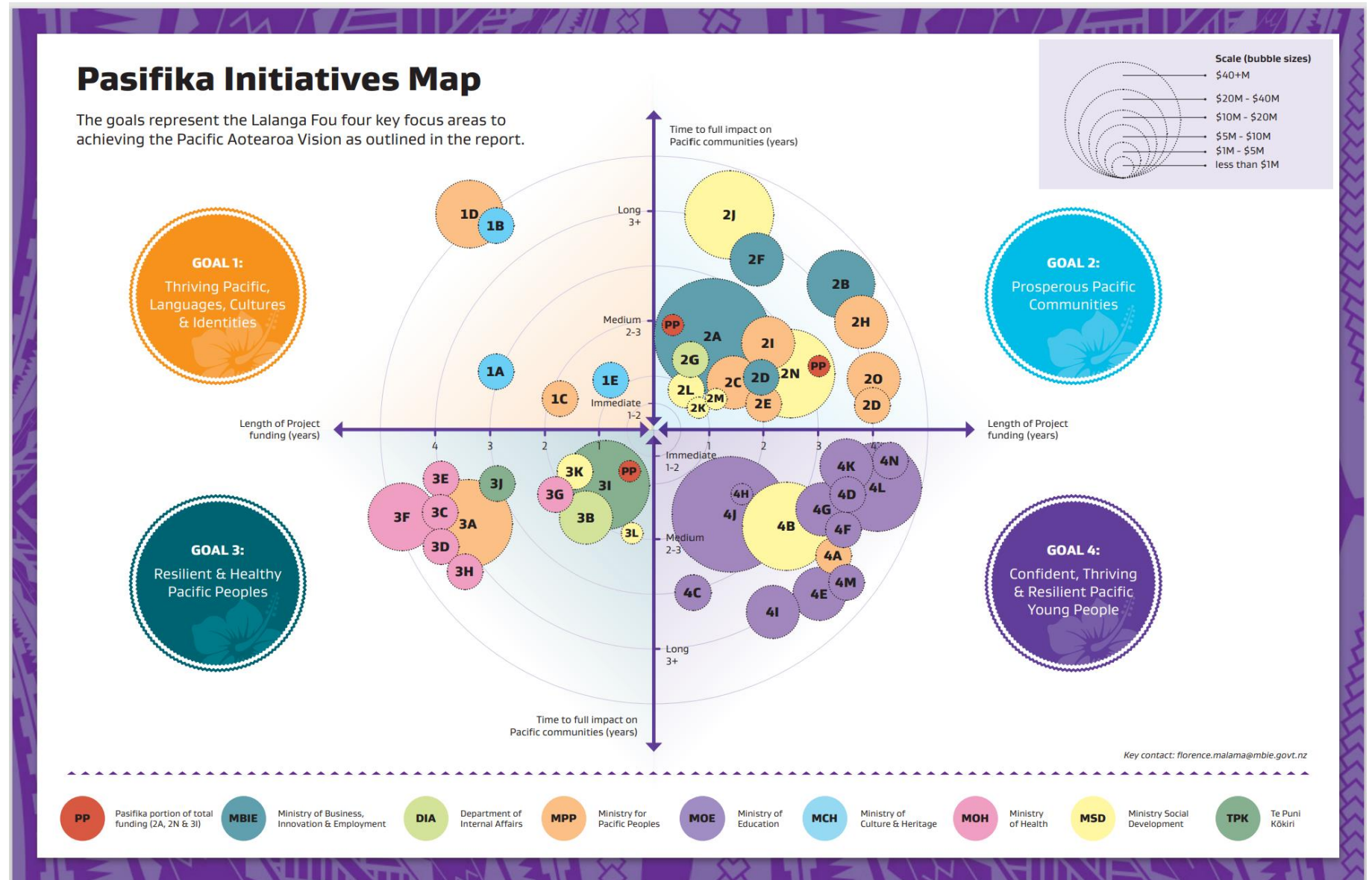
Driving improved
wellbeing
outcomes for
Pacific peoples in
Aotearoa

- **Improve line-of-sight and coordination of government investment** to improve the success of investment and government decision making that affects Pacific peoples
- **Co-design an All-of-Government Pacific wellbeing outcomes framework** and measure and monitor the impact of government investment through Pacific specific wellbeing indicators and measures
- **Lift Pacific capability, cultural awareness and competency** for the public service and organisational capability for Pacific communities


Pacific Wellbeing Strategy – we’re beginning to lalanga



Pasifika Initiatives across Government – An example of sharing data



What we are working towards

A series of concentric circles in shades of orange and red, centered on the bottom left of the slide, creating a ripple effect.

Our 5 to 10-year outcomes/goals for this work:

- Clear significant improvement in Pacific wellbeing
- Growing use of a Pacific wellbeing approach to inform policy, investment and decision-making
- Communities, people with lived experience and providers are participating confidently in the system
- Pacific ways of knowing, being and doing and cultural identity are embedding in the system
- Pacific and non-Pacific workforces are increasingly capable, competent and supported to influence outcomes for Pacific peoples
- Government investment in Pacific peoples is aligned with Lalanga Fou to support Pacific wellbeing
- Pacific-centric cultural and economic evidence is directing government investment and decision-making



Pacific Wellbeing Talanoa



IRI'IRIKAPUA TA'I

Presentations on Pacific Wellbeing frameworks and models



Fuimaono Karl Pulotu-Endermann

Fonofale Framework



Dr Karlo Mila

Mana Moana Framework



Kupa Kupa

Te Vaka Atafaga Framework





Pacific Wellbeing Talanoa



IRI'IRIKAPUA RUA

Breakout Sessions





Pacific Wellbeing Talanoa



Present themes and findings to
Hon Aupito Toesulusulu Tofae Su'a William Sio
Minister for Pacific Peoples



Closing Address

Hon Aupito Toesulusulu Tofae Su'a William Sio
Minister for Pacific Peoples



Closing Pure





Pacific Wellbeing Talanoa

