



2022 - 2032

TE WA NI KABOREREI THE CANOE



Te Wa ni Kaborerei - the Canoe

E kairaki butin te wa aio man te rabakau n atakin biribirin namwakaina ao kamatebwaian taian itoi. Kamatebwaian taian itoi ma atakin butin namwakaina, e kona n tuangia taan borau bwa ningai te tai ae e na nakoraoi iai kabutakin waia. E buokiia naba taan borau bwa n ningai aia tai ae e na nakoraoi iai aron kabwakakin te wa bwa a nang waakina te mwananga nako ao n kona n tokanikai man te buaka i marawa ke kanganga ake a na aitara mangaai i nanon te borau. E kona naba n tuangia bwa ningai te tai ae a nang mwakuria (launching) iai tabeia bwa a nang uarokoia nakon te tia ao man kona n kaaitarai kanganga ake a na kaitibo mangaai. E kabotauakaki te wa bwa rabwataia aomata, utu, kaawa ke te aba, are taan borau aikai, a rineaki mairouia ke a mwakuri ibukia. Taan borau i aon te wa aio bon ngaiia ake a tia n rineaki, kataneiakaki, kaewenakoaki ao ni bane aroia ke ni mwaatai n aron katei, rabakau n aekan te akawa, iranikai, kateitei, ribana ke taan ototo. Ai moarara riki rabakauia n anga te reirei i aon te katei ma te taetae ni Kiribati, are a tia n anganaki te onimakinaki bwa taan beku ibukin te botanaomata. Taan borau aikai ngaiia ake a boborau ni buaka ao n kabuta aia koaua ao man tibwa rabakauia n totokoi kanganga ibukia te botanaomata, riki bwa a na totokoa te kangaanga bwa e na aki bua ara taetae ni Kiribati ma kateira ao rabakaura ao man teimatoa ni kabonganaki.

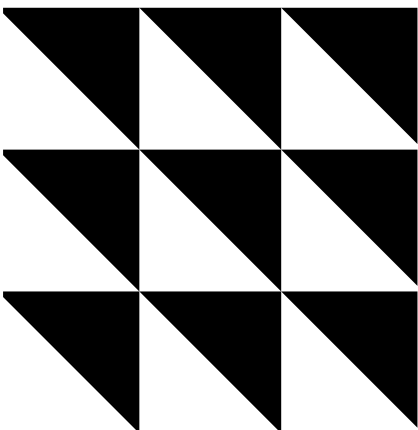
Published in August 2022

By Te Botaki ibukia kaain te Betebeke

PO Box 833
Wellington
6140

www.mpp.govt.nz

Facing page photo:
Tom Noble Creative





Kanoan te Boki

1

Te Wa ni Kaborerei

4

Kanoan te boki

7

Ana Maroro ni Kaukuki te Minita

11

Ana maroro ni kaukuki Te Tia
Koroboki ibukia kaain te Betebeke

12

Te Kaukuki

15

Taratara: Karikirakean aia taetae kaain
te Betebeke e karekea te rikirake i aon
Aotearoa



26

Karikirakean taetaen taian aba rinanon
bibitakin kanoan boong

28

Te Wa ni Kaborerei: Te Waaki ae e na
kairira nakon taai aika a na roko

30

Oin Mwakuri aika teniua ibukin
karikirakean kabonganan aia taetae
kaain te Betebeke i aon Aotearoa

31

Teniua oin te kairiri ibukin mwakuri
n taai aika a na roko n ikotaki ma te
karikirake

33

Taian waaki ni mwakuri ibukin taetae
aika a kakaokoro



16

Te Tiriti o Waitangi ao Te Wa ni
Kaborerei

17

Rongorongon ni kawai ibukin aia taetae
kaain te Betebeke i aon Aotearoa

19

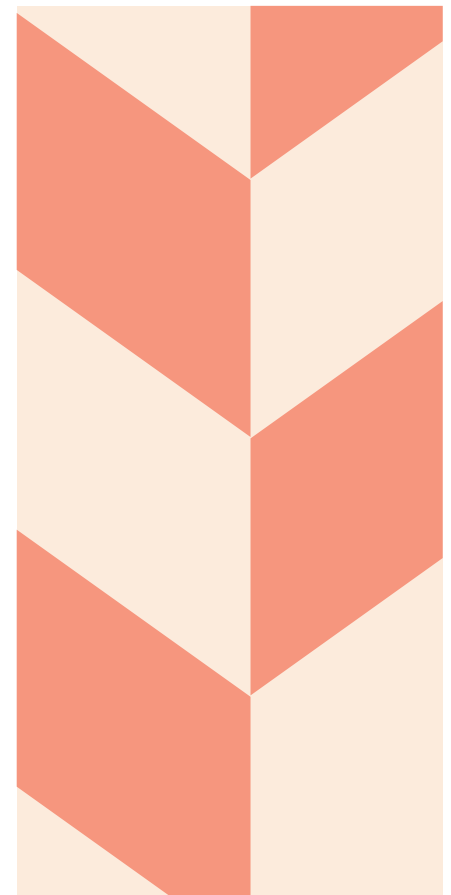
Baika a totokoa kabonganan ao
kateimatoan te taetae

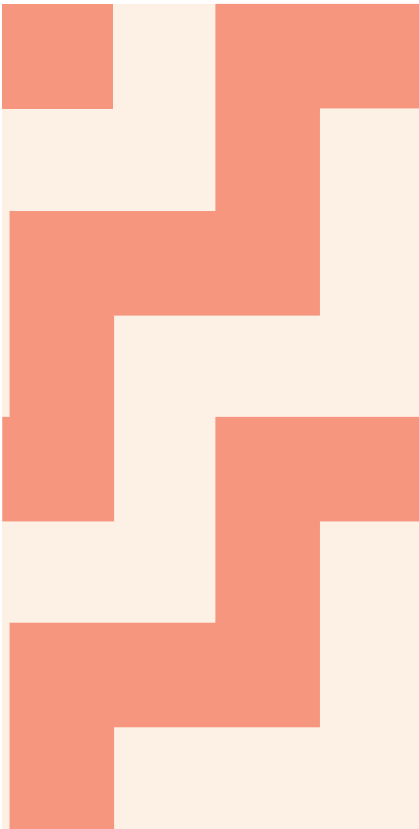
22

Katabeara ao reitakira ma kaain te
Betebeke

25

Kawakinan oin ara taetae bon
inaomatara





42
Oi ni Kouru 3: Karekean anga ma itera
aika a bati ibukin Taetaen Betebeke
bwa a na rang kakamanenaaki riki ao n
tabo riki tabeua

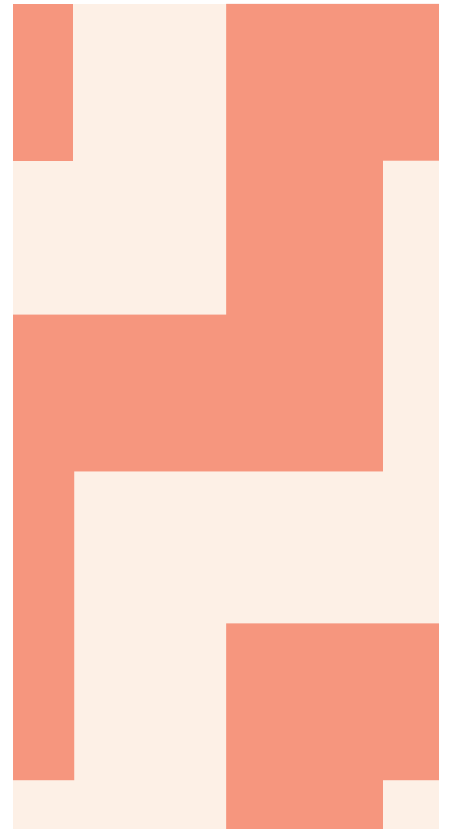
45
Aikai Taetae man te Betebeke

46
Te taetae ni Kiribati

50
Reitakira ma tabeua waaki aika a
kakawaki

52
Karaoana, tutuoana ao rinanoana

53
Annex 1: UNESCO Classifications



34
Babaire ibukin te mwakuri

36
Mwakurian Aia Taetae kaain te
Betebeke n te Kaawa

38
Reken te bitaki man te mwakuri

38
Oi ni Kouru 1: Kinakin kakawakin aia
taetae kaain te Betebeke i aon Nutiran
ae e bwanin

40
Oi ni Kouru 2: Kamatoakin kawai ma
karekean bwaai aika a kainanoaki
ibukin reiakinan aia Taetae kaain te
Betebeke ao n reirei n aia Taetae kaain
te Betebeke



54
Annex 2: Kabaeara irouia taan
reiakinaki n taian reirei ae angi
Taetaen te Betebeke ao teutana te
taetae n imatang (Immersion) ao te
anga reirei n iteran te tai Taetaen te
Betebeke ao n Imatang (bilingual)
ao reirei riki tabeua ibukin taetaen te
Betebeke n taian reirei

63
Annex 3: Kamaiuan taian taetae n
aekana nako

64
Annex 4: Karinanin aia taetae kaain te
Betebeke

66
Taabo ake a karekei rongongo mai iai
(References)



**Hon Aupito Toeolesulusulu Tofae Su'a
William Sio – Te Minita ibukia kaain te
Betebeke**

Au Ikawai aika kaain te Betebeke a aki toki
n tataekina,

“E lē falala fua lā’au o le vao, e māfua ona
falala ona o le agi o le matagi”

(Gagana Samoa)

ke A aki kona ni kakamwakuri arokan te
buakonikai n akea bukina, a ti kakamwakuri
man te ang.

Ana maroro ni kaukuki te Minita

Man te 1970 tabun, I a tia n nori koraki man te Betebeke ni botumwaka ao ni matoatoa n aia mwakuri ni kaitarai angibuakan te waaki n te aonnaba ae e korakora iai kabonganana te taetae n lmatang, ao ni kona ni katabwena te kawai ae e na kinaki ao n rikirake iai kabonganakin aia taetae kaain te Betebeke ma kateia i aon Nutiran. E ngae ngke ti tauaki i aan te korone ao ni kairoroaki bwa ti na moanibwaia te taetae n lmatang ibukin reken te tokanikai, a teimatoa koraki aikai n taua aia koaua ae ara taetae ma kateira ngaira kaain te Betebeke bon ngaia batora ke boton arora ni maiu. A ataia bwa ngkana e teimatoa ara taetae n te Betebeke ma kateira, e teimatoa naba ara botanaomata, ao Nutiran e na riki bwa te tabo ae tamaroa ibukia aomata ni kabane.

Ngkana I katurua n iangoia koraki ke aomata aikai, I iangoia n aron: Mama Tupou Manapori man te Hillary College are e aki totoki n tiku imwin te reirei n reiakina ana taetae ao ana katei ni Cook Islands nakoia ataein te reirei; Mama Mere Tapaeru Tereora are ngaia ae e katea te moan reirei n te taetae ni Cook Islands ae te Punanga o Te Reo ibukia ataei aika a uarereke; le Afioga ia Tofaeono Tanuvasa Tavale QSM are e karaoi tabeua bwaai aika a kona ni kabonganaki ibukin te taetae n Samoa ao ngaia naba ae e mwakuria karekean te moan wiki n taetae n Samoa (Samoan language week) i aon Nutiran ae e bwanin ao ni kairaki iroun te New Zealand Human Rights Commission ao te Radio Samoa i aon Auckland; ao ai taan tia reirei ao taan kairiri n te kawa ake a waakina katean te moan reirei ibukin te Taetae n Niue ao n lmatang i Favona Primary School n te ririki 2021. A tia mwakuri aikai ni kamatoa batora are ti na riai n teimatoa ni mwakuriia.

Inanon bwi ma bwi n ririki n nako, ao a tia ni kaoti waaki aika a kabatia te katabeaianga - A kekerikaki Taetaen te Betebeke ao iai aika a tiku inanon te kananokokoraki bwa a kona ni mauna nako. Tiaki ti ngaira n ara raraoma aio ngkai ti ataia naba bwa taetaen aba nako n te aonnaba n ikotaki ma Kaain te Aba i Aotearoa a rinanon naba te kerikaki n aia Taetae ao ni kantaningaia bwa a na kona ni katea bukin aia taetae ni Maori bwa e na aki mauna

teimatoa aia taetae. Ngaira – kaain Māori ao kaain te Betebeke – titebo ngaira ma taian karaanga aika a uaia ni biraki, are ti buti nakon Marawan te Betebeke ike e bauta ara reitaki ae e kakawaki bwa aomatan te marawa ae raababa (vast blue Pacific Ocean) ngaira aika ti uaia n tibwai rikira n aomata (whakapapa), aroarora (customs), baika a kakaawaki iroua (values), ara koaua n te onimaki (spiritual), ara taetae ao ai kateira (language and cultures). E rikirake te reitaki ae e onoti aio ao e tabe ni korakora ma ni korakora n reitakia ara utu ma mwaitia ara koraki n ataei ike a tibwaua rikia ma mwia ni Māori ao ni Betebeke. Aio korakora ae e matoa ae ti kona ni kaotia nakon te aonnaba.

Ti a manga taraia ara koraki ni Māori are ngaia ngkai aika a katea te banna ibukin aia konabwai ni manga kamaiua oin aia taetae, ao ti kan reitaki ao ni waaki ma ngaia n aio, ti na reireinira irouia ao ti na karaoi tabera ni boutoka aia mwakuri ma tabeia ibukin noran te taetae ni Māori bwa e na rikirake ma ni matoatoa kabonganakina.

E bon rang kaokoro Nutiran n aroarona ma kaain te Betebeke. Ngaia teuana te aba n te Betebeke, ao ngaia naba teuana mwengan tei Betebeke ae e korakora ana mwaiti n te aonnaba. Man aio, ao e airi ma katabeara bwa ti na kawakina ao ni kabura i eta ana taetae tei Betebeke i nanon ara kaawa i aon Aotearoa.

Te Wa ni Kaborerei 2022-2032, te moan waki i aon Aotearoa, ae maan aron babaireana, ibukin boutokakin aia taetae kaain te Betebeke inanon ana rabwata te tautaeka, taian kaawa ao rabwata aika iai nanoia n te waki aei (stakeholders).

Te Botaki ibukia kaain te Betebeke

E otinako te waki aio man te kataratara ae: Karikirakean aia taetae kain te Betebeke e karekea te rikirake i aon Aotearoa. Iai teniua taian katuruturu n kouru:

- 1. Kinaakin kakawakin aia taetae kaain te Betebeke i aon Aotearoa**
- 2. Kamatoakin kawai ao karekean bwaai aika a kainanoaki ibukin reiakinan aia taetae kaain te Betebeke ao te reirei i nanon aia taetae kaain te Betebeke**
- 3. Karekean taabo ibukin kabonganana riki aia taetae kaain te Betebeke, ao n taabo riki aika a bati.**

Ti noria n tain te buti-n-aoraki COVID-19, bwa aia taetae kaain te Betebeke e rang bongana ibukin mauria ara botanaomata n aia kaawa, ao a tuangira bwa ngkana a teimatoa ara botanaomata n kabongana oin aia taetae n ikotaki ma te taetae n lmatang, te kantaninga bwa a na korakora man marurung naba n aia iango, aia katei, rabakauia n te reirei ao kabonganakin kaubwaia.

I kan kaitaua te mwakuri ni boutoka ae e koro arona i aon Te Wa ni Kaborerei n te tai ae e nako, are ti a karekea mai iroun te Prime Minister, Minitan te Tautaeka, ana tabo ni mwakuri te Tautaeka ma taan mwakuri, taan rabakau man taabo n reirei, taan karaoi kakae ma ukeuke ao nake a botumwaka ke n ninikoria aika kaain te Betebeke i aon Aotearoa, riki bon ara roronirikirake.

I kan uotarake Te Wa ni Kaborerei aio nakon Nutiran, bwa e na kamatoa riki tataekinan katein te Betebeke ni boong ao taai aikai.

Ngaia are ti na bane n tiku ma te kariaria ke te ingainga nakon te tai are a na kaoti iai taian ang ibukin te bitaki ao ni kaitiboaki ma ara iango ni katiteuanaki, ike a na uotirako ao n tabekira rake ma te onimaki nakon te tabo ike ara taetae n te Betebeke ma ara katei a tibwauaki iai, a reiakinaki, a kabonganaki, a boutokaki, ao a karikirakeaki ma ni kamanenaki i nanon mwengara, inanon kaawa ao ara tabo ni mwakuri i aon Nutiran ni kabuta.

**Hon Aupito Toeolesulusulu Tofae Su'a
William Sio – Te Minita ibukia kaain te
Betebeke**





**Laulu Mac Leuanae –
Tia Koroboki ibukia kaain te Betebeke**

A bibitaki taian waaki ma aroaro ma te boto, e tiku n arona.

N te ririki 2018 ngke e tabe ni waaki te Ministry i nanon te ririki tabun ni mamaroro ma kaain te Betebeke rinanon aia kaawa, ao e matata bwa oin aia taetae kaain te Betebeke bon boton aroia ao ngke e a waaki te mwakuri ibukin boutokakin ao kateimatoakin aia taetae kaain te Betebeke, aia koaua ni korakoraia e bon teimatoa n arona.

Ana maroro ni kaukuki Te Tia Koroboki ibukia kaain te Betebeke

I boutoka n tainako aia taetae kaain te Betebeke ao I teimatoa ni kauntaba te babaire (system) bwa e na riai ni kinai korakoraia ara koraki aika a tuai man kamanenaki. E kantaningaki aia taetae kaain te Betebeke, aia katei ma kinakia bwa e na rikirake n teimatoa bwa ara moan bwai n ara tabo ni mwakuri ke n ara Ministry. Ti ataia bwa ngkai e teimatoa kinakia ara botanaomata n aroia ma e tabe ni kerikaki aron teimatoan aia taetae. Are nanona bwa te mwakuri i aon te itera aio e a rangi ni kakawaki riki ngkai nakon taai ake mai mwaina.

Ngkana ti karikirakeira n ara taetae, ti karikirakea naba arora n taai aika a na roko. Ngkana ti kaikawaia ara ataei bwa a na teimatoa n taetae n taetaen abaia, a na bon kona n tauraoi ao ni konabwai n aia reirei ao n aia mwakuri. A na rangi ni marurung raoi aia iango ma rabwataia, ao ni korakora aia atatai bwa antai ngaiia ao atakin aroia n aomata.

E a tia ana karikirake te Tautaeke i nanon aia taetae kaain te Betebeke n anganira te kona n reitanako te mwakuri ao n ata aia kantaninga kaain te Betebeke ae e reke man ana iango ma ana taratara (vision) te Pacific Aotearoa Lalanga Fou. Ara waaki aikai a ataia bwa kakoroan nanon ara kouru aikai e na rinanon kanganga aika a mwaiti ibukina bwa akea temanna ke teuana te tabo ni mwakuri ae e atai bwaai ni kabane ibukin aron waakinana, e rangi ni kakawaki te uaia n mwakuri ni ikarekebai.

Te Waaki ae e aranaki bwa te 'All-of-Government Pacific Wellbeing Strategy' ngaia teuana te kawai ni boutoka te aekaki ni waaki aio. E na kamatoai riki aanga ni kairiri ma te tautaeke ao n ataia bwa te karikirake aio e irekereke ma kaain te Betebeke ke aia kaawa kaain te Betebeke. Aio e ikotaki naba ma karikirakean ao boutokakin aia taetae kaain te Betebeke bwa boton aroia kaain te Betebeke ao e na kaweneaki bwa boton te waaki ibukin taai aika a na roko.

Te Wa ni Kaborerei 2022 – 2032 e anganira te banna ae ti na kona iai n reita aia kekeiaki ao aia kakamwakuri kaain te Betebeke ma aia kaawa ao te tautaeke n te aro are ngaira ni kabane, ti na kaotinakoi aanga n ibuobuoki ae a na kona ni kawakina ao ni kateimatoa ara taetae. Kororaoin aio e na ataki man tamaroan aron ara mwakuri

ni kabane irarikiia kaawa ake tabeua, n atakin te iango ma te taratara ae Karikirakean aia taetae kaain te Betebeke e karekea te rikirake i aon Aotearoa.

I kan anga au kabanea n taeka ni kaitau nakoia naake a teimatoa ni kakorakora ara taetae ni katoa bong n aanga aika a uarereke ke a bubura – bwa tao ngkami tiina (mama), aika kam kaikawaia ataei ma oin aia taetae, te roronrikirake ae e karaoi ana reirei online ibukin reiakinan oin ana taetae, taan mwakuri aika kam katieuatakea taekan wikin te taetae (Language week) n ami tabo ni mwakuri, ara kara (tibura) aika kam teimatoa n ongongora nakon rerion te Betebeke – ti nori ao n atai baika kam karaoi, ao ti rang karabwai ngkami iai. Kam bane n teimatoa man aki neneaki ibukin baika kam kan kakaraoi ao ara kantaninga bwa ti na kona ni wakin baika kam karaoi n te tai aei nakon taai aika i mwaira ma te buoka ae e kororaai.

**Kam bati n rabwa ao are i eta,
Laulu Mac Leuanae**



Te Kaukuki

“Ke lava te lau o te Kupega te lau mua ma te lau muli, ke naunau ma galulue fakatahi” (te gagana Tokelau)

“A na riai n tau mwaitia taan mwakuri ni bobotia raoia i nanon aia kaawa.”

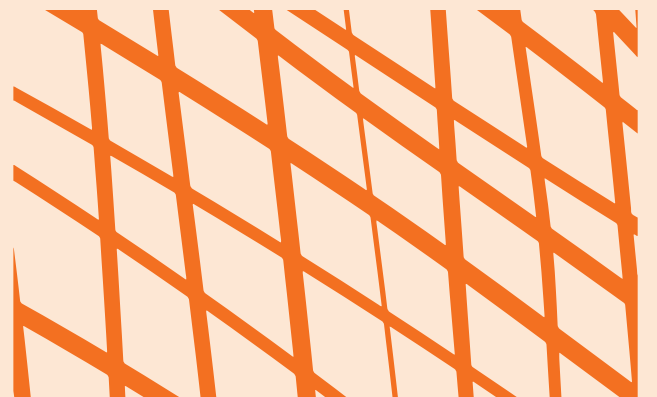
N aron akawaia kaain Tokelau ma te karaun, e kainanoaki te uaia ni mwakuri ni kabane n iteran te karaun ake uoua ibukin tauan te ika. Te uaia ni maroro ao te uaia ni waaki bon ngaia karekean te kokona ae e mwaiti ibukin kamwarakeaia kaain te kaawa. Te kakauongo, reiakinan oin ara taetae bon ngaia ae e maubonira, n aron te ika ma i taari are e anganira te korakora, te marurung ao arora ma korakorara ni maiuakina te maiuraoi. Ngkana ti na kateimatoa ao ni manga kamaiua te taetae n te Betebeke, ti na riai ni bane ni mwakuria te karaun bwa a aonga n reke konara aika a mwaiti.



E a bon maan aron aia mwakuri ma rongorongoia kaain te Betebeke ma aia kaawa ao koraki ake a bekutata ibukin aia taetae kaain te Betebeke ni wakina aia mwakuri aika a tuai man kakaraoaki ma i mwaina, ao ni karioi aia iango ni mwakuri n ai aron mwakurian te karaun are e na kona n teimatoa man tikunako iai aia taetae kaain te Betebeke. Te waaki aio e kaungaki man te mwaneka are a tia ni katanea kaain Māori ke tangata whenua ni wakina ao ni kateimatoa aia taetae ni Māori i aon Aotearoa. Te waaki aio bon taian boutoka nakon korakoraia koraki ake a teimatoa nanoia ni kan kateimatoa ao ni manga kamaiua aia taetae kaain te Betebeke n ai aron arora ni karaun, arora n taetaenikawai, arora ni mwakuri n ti teuana ao kamoamoakin aia mwakuri raora ake a bati konaia i nanon te waaki.



Bottom photo:
Tom Noble Creative



Karikirakean aia taetae kaain te Betebeke e karekea te rikirake i aon Aotearoa

Rongorongon te korone (colonisation) ni kawai i aon Aotearoa e karika te iango ae reken te tokanikai irouia kaain Māori ao kaain te Betebeke i Nutiran, a na riai n taetae n Imatang ni kabane.

Te koaua aio are e kairoro ao e teimatoa n tauia ma te matoa te rorona ma te rorona bwa a na mena n taabo ae akea ae e ata nanon aia taetae ke akea ae e tabeakina kakawakin aia taetae. Aio are e a karika korakoran bwakan kabonganakin taian taetae i aon Aotearoa. E ngae n anne, ao kaain Māori ae bon kaain te aba ke tangata whenua a kauntaba ngkai, te iango aio ao a kabanea ngkai korakoraia ni kamaiua oin aia taetae ike a manga riki bwa katoto ke banna ni kakairi n te aonnaba. A rawata naba ae a waaki n arona aio man aia kaawa kaain te Betebeke ibukin oin aia taetae. Iai naba aia rongorongo n tokanikai n aron – ngkana e rikirake oin ara taetae irarikin te taetae ni Māori, e na rikirake naba ara botanaomata, ao e na rikirake Aotearoa.

Te karikirake i aon aia taetae tenan tangata o te Moana-nui-ā-Kiwa (n ikotaki ma tangata whenua ao te reo Māori) boni ngaia batora ni kawakina arora ma kinakin ara katei ao karikirakean marurungia ara botanaomata, reireia, bonganaia ao tokanikaia ae ngaia kaain te aba. E rang kakawaki riki aio ibukia ara koraki n ataei ao ara roronirikirake bwa boutokakin oin aia taetae boni ngaia katuruan aroia, korakoraia ao aia konabwai ma aia ataibwai. Tei Aotearoa ae e nora kakawakin ara taetae, ara katei ao kinakia ara ataei e na bon rang kakawaki ibukin karikan te aba aio bwa mwengara ae ti kamoamo man rau iai.

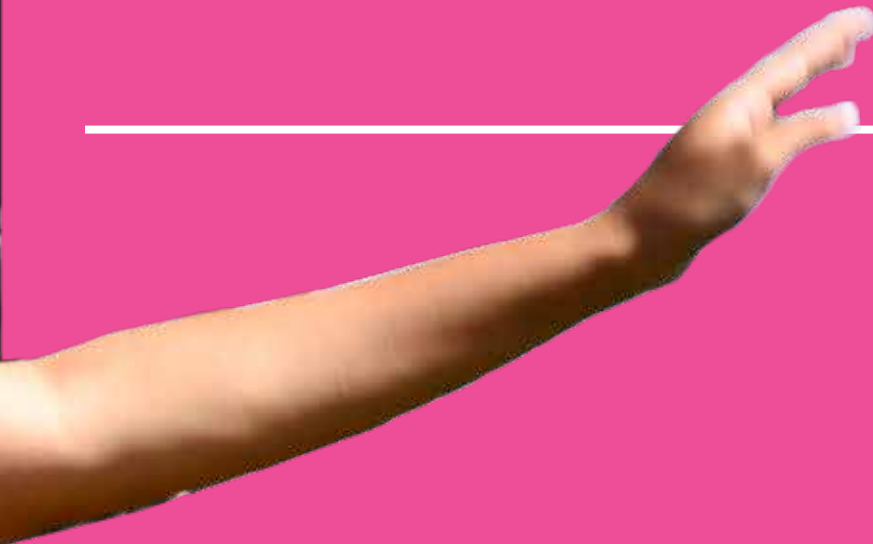
E matata n taian kakoaua bwa karikirakean aroia kaain te Betebeke n taetae aika uoua ao n taetae aika a bati, a na:

- Kakerakei mwin taian reirei aika a tamaroa, n ikotaki ma kareke beba (qualification rates) ao te boraai ni karekean te reirei;
- Karikirakea reken te mwakuri ao aanga ni karekemwane
- Karekei reitaki i nanon te katei ae e kakorakora te aroaro ma marurungin te iango ao te rabwata.
- Kakorakora te iango ma te kantaninga, te konabwai ao kinakira ao e ibuokanibwai naba nakon te aroaro ae teimatoa ma te reitaki; ao
- Kakerakea ana bwaibwai te aomata ao kakerakea mwin te kakamwakuri (productivity) man taabo ni mwakyuri, e na karikirakea kaubwain Aotearoa.

Rikiraken te taetae ni Māori ao te taetae n te Betebeke i aon Aotearoa a rangi n reitaki ao n toma nakon te rikirake, aroaro ao ana tokanikai Aotearoa. Ti riai ni karinea kakawakin te taetae ni Māori n nnena ae ngkai ao ti riai ni kawakina aia taetae kaain te Betebeke ibukina bwa ara konabwai n reitaki e rang kakawaki ibukin rikirakera.



TARATARA: Karikirakean aia taetae kaain te Betebeke e karekea te rikirake i aon Aotearoa



TAIAN KATURUTURU N KOURU



Kinakini kakawakin aia taetae kaain te Betebeke i aon Nutiran ae e bwanin



Kamatoakini kawai ma karekeani bwaai aika a kainanoaki ibukin reiakinan aia taetae kaain te Betebeke ao te reirei i nanon aia taetae kaain te Betebeke

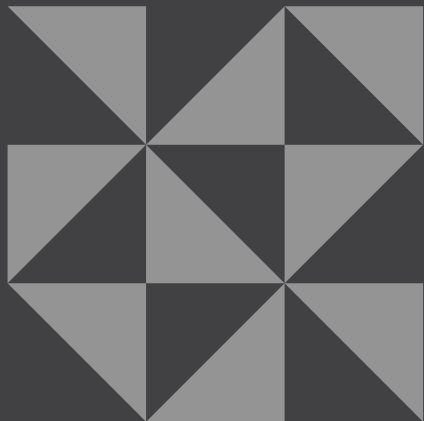


Karekean taabo ibukin kabongan an riki aia taetae kaain te Betebeke, ao n taabo riki aika a bati

Te Tiriti o Waitangi ao Te Wa ni Kaborerei

“E kore au e
ngaro; te kākano
i ruia mai i
Rangiātea”

I riai n aki bua, bwa
ngai te a
ti ae rikirake mai
Rangiaatea.



Rikira, ara onimaki n tamnei, kateira ao kabaeara n ara tabo i marenara ngaira kaain te Betebeke ao kaaini Māori ao te Tiriti o Waitangi ae ngaia reitakira n te tua, ti tebo taraana ma te wa-uowa, are bon ti te aekakina ma aia boborau kaain te Betebeke.

Tarakin taiani korakora ma rabakau i aon reitaki aikai, e na bon buokira ni kaira kawaira i nanon taiani marawa aika i mwaira.

Iai aia reitaki ae kakawaki kaain te Betebeke ma kaain te aba ke tangata whenua

Tenan i Māori boni ngaiia kaain te aba ae Aotearoa ke tangata whenua ma mwii (roots) ae e nano rinanon ana marawa te Betebeke. Māori ao kaain te Betebeke a tibwaua rabakauia i aon te borau ma ngkoa, ngaiia naba taani mwamwananga ni kakaai aaba ao a karaoi naba mwakuri aika a tuai mani kakaraoaki ma ngkoa, a borau naba rimarawan te Betebeke ae rababa (Moana-nui-ā-Kiwa) ibukin naba kakaean aaba aika a boou. I nanon iranga ririki n nako, ao a mwananga mai Hawaikinui, Hawaikiroa ao Hawaikipāmmao. Kaain Māori ma kaain te Betebeke a kaman reitaki ke a katiteuanaki bwa tenan tangata o te Moana-nui-ō-Kiwa ke aomatan te marawa ae bubura man rababa. Aroarōia, baikara kakawaki irouia ke anuaia ma aia taetae, e oti iai bwa a tia n rereitaki i marenaia n taai aika a bati ma ngke rimoa.

Taian kateiriki ke rikira a kaota rekerekera ma ara bakatibu ke e oti iai rikira ae ti ibuobuokia, baikara bwaai aika a reitira n arora n ara kaawa ae ti maeka iai ao arora riki aika a bati. Rekerekera aio ma rimoa e a moanna ni kamatoaki riki ma rikiraken mwaitia kaain te Betebeke n rikia ma kaain Aotearoa ke iwi ō Aotearoa.

Karinean nanon Te Tiriti ao boutokakia kaain te Betebeke

N te waaki aio (strategy), ao te iango ma taian maningongo i nanona, a bane ni karinea Te Tiriti ao a kakooua mwin te korone i aon Aotearoa, n ikotaki ma tein te kakaokoroaki (structural racism) ao te aro are a tia n rotaki iai kabonganakin ma kinakin te taetae ni Māori ao aia taetae kaain te Betebeke. E a tia te Korone ni karekea te iango ae te taetae n Imatang bon ngaia reken te kabwaia ao te rikirake. N te iango aio, ao taetaen abara ma aroarora a bon aki bati ni kabonganaki ke n tibwaki nakoia rooro ibukina bwa e aki tabeakinaki irouia aomata. Aio are e a kariki kangaanga nakon ara taetae ibukia rooro aika a uarereke aika i Māori ao i Betebeke.

Te Tiriti e karekea te banna ibukin tarakin taian babaire aika a aki eti nakoia kaain Māori ma aia botanaomata ao a mwakuri ngkai ni karaoi taian kaioki aika a korakora n aanga aika a bati. Te maraki are a tia n rinanon kaain Māori, ti reitaki man namakinna naba ngaira kaain te Betebeke ao ti ataia bwa aio naba ara tai ni karaoa nanona ibukira. Taeka n rabakau ae **‘A logo tai ua logo uta’** - ke ngkana e namakinaki i taari ao e namakinaki naba i aon te aba, e nanonaki ibukin katabeakira ibukia aomata. E taekinaki iai katabeara ni kabane bwa tina bane n tararuaira ke n tabeakinira i bon iroura. Ai ngaia are ara kekeiaki ke ara konabwai ibukin kamaiuan ara taetae i nanon te Waaki aio, ti kantaningaki iai bwa ti na kona n tararuaira, ti na reireinira ma iai, ti na boutokaia ao ti na taua ni kateimatoa reitinakoan te mwakuri irouia kaain te aba ke tangata whenua ao aia taetae kaain Māori.

Rongorongo ni kawai ibukin aia taetae kaain te Betebeke i aon Aotearoa

**“Kua tupu, kua aka. Kua toro te papa i Aaviki”
(te reo Māori Kūki ‘Āirani)**

E a tia ni bwebwerake, e a uniki wakaaana ao e a butanako Boton Avaiki.



A kaman karaoi mwakuri ni kawakina oin aia taetae kaain te Betebeke i aon Aotearoa Nutiran man moan mwanangaia ke mwaingia ni maeka i aon Aotearoa Nutiran.

I nanon aia botumwaka, ao ti a tia n nora katean ngaon te taetae n te Betebeke ao aron reiakinaia rinanon taian reirei, taian rerio, taian beeba ni kaongora (media), korobanna man te Betebeke ao bobotaki aika a kaotaki iai taian katei man te Betebeke ao ai taabo n reirei i aon Nutiran ae bwanin. Ti ataia naba bwa e rang kabonganaki aia taetae kaain te Betebeke n taian bobotaki n Aro rinanon te White Sunday ao n aia botaki ataei n te Tabati irouia kaain Tonga, ao rinanon taian raranga irouia taan rabakau i aon te raranga, te waewae ke te tivaevae ao taan karaoi tapa ao ai rabakau i aon te akawa ao te kaba wa. Te rikirake i aon te anga reirei, reiakinan te rabakau ao uotakirakean aia taetae kaain te Betebeke ma aia katei bon mwin aia boutoka ae e korakora taian kaawa nako ae kaain te Betebeke.

Aia taetae kaain te Betebeke e a nang korakora naba rotakina i aon Aotearoa, bwa te taetae n lmatang e a rang kabonganaki riki n taabo ake a tia n rang ni korakora iai kateimatoan aia taetae kaain te Betebeke, n aron te mwenga ao taian Aro. E ngaie ngke e bon reitinako kabonganakan aia taetae kaain te Betebeke i Aotearoa Nutiran, a bon ti kabonganaki riki n te mwenga ao taian Aro.

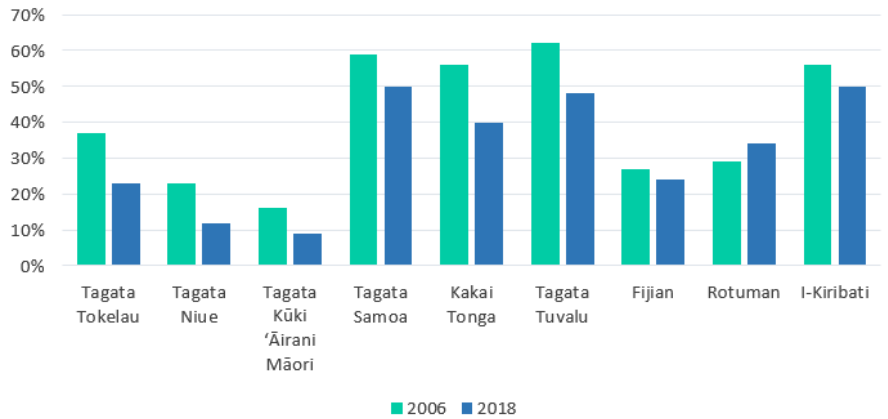
Uarereken iangoan kakawakin aia taetae kaain te Betebeke i tinanikun taabo aikai ngaia ae e a karika kerikakin mwaitia koraki aika a rabakau te taetae n te Betebeke n rooro nako ao n angiin taian taetae. Te kerikaki aio e airi ma

buan rabakauia kaain te Betebeke, rongorongo ni kawai, ao taian reitaki i nanon te kateiriki.

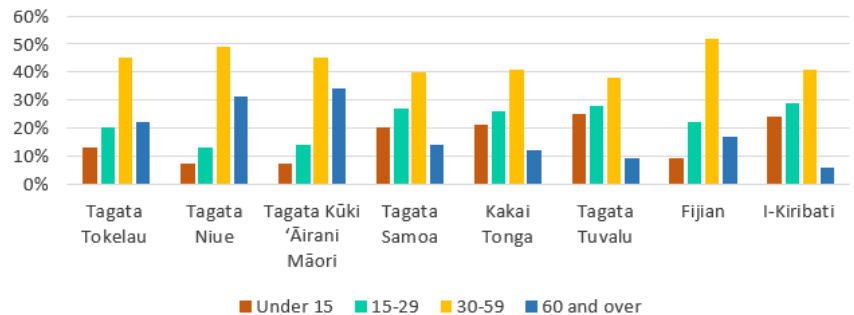
E a tia te United Nations Education, Scientific ao Cultural Organisation (UNESCO) ni katebenakoi tabeua aia taetae kaain te Betebeke n aron te taetae ni Tokelau, te taetae ni Niue, te taetae n Māori Kūki ‘Āirani ao te taetae n Tuvalu bwa taian taetae aika a kai rotaki ke a nang mauna. Are nanona bwa taian taetae aikai a ti kabonganaki ke ni kamanenaaki irouia kaaro ke tiibu, ke irouia ataei ma ti i nanon mwengaia. Angiia koraki aikai a bon bungiaiki i aon Nutiran, ae ngaia e a bon irekereke ma buan aia taetae kaain te Betebeke. Annex 1 e kaota rongorongon riki baika e taekin UNESCO i aon ana kainibaire are a otinako iai ana katautau.

Mwaitin te roro i an 15 te ririki ae a kona n taetae n oin aia taetae n aban nako te Betebeke aikai, e a rang kararaoma uarerekena ae ti 16%

Proportion of ethnic speakers of Pacific languages in New Zealand (2006 and 2018 census data)



Total speakers of Pacific languages by age group (2018 census data does not include Rotuma)



I nanon te maan ae 15 te ririki, e a tia n rang kerikaki mwaitia aomata aika a kabongana oin aia taetae ni Betebeke, riki e nang korakora te kerikaki ni kabongan te taetae n Tonga.

Ngkana ti karaua n tara aron tein kabongan aia taetae kaain te Betebeke ma kurubunakia aomata ma roroia, e rang kararaoma tarakin mwin te kakae, ma tabeua kurubu ae ti 7% mwaitia ake i aan te roro ae 15 ae a kona n taetae n oin aia taetae.

E rangi ni katabeianga ae ti 16 te katebubua (16%) uarereken mwaitia te roro aika a bwaka aia ririki ni maeu i an 15 te ririki aika a kona ni kabongana oin rikiaia ae taetaen abaia. Korakoran

uarereken mwaitia te roro a tabe n rikirake n taetae n oin abaia, e kakina ikai bwa e rangi ni kainanoaki waaki aika a boou aika a na kabirirakea kinakin kakawakin Taetaen te Betebeke ni irekereke ma te Katei, bobotaki ao kaubwain abara. Ngkana e na karaoaki aio, ti riari n reitaki ma taabo nako ni babaire ao ni katei kainibaire ma taian boutoka ibukin manga kamaiuana ao kateimatoana. Te reirei bon ngaia ae e aki toki ni kaira te karaki i aon mwanangaia aomata ke tagata o te Moana-nui-ā-Kiwa ao bon akea kaokorona ngkana e roko n taekan manga kamaiuan taian taetae.

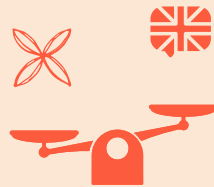
Baika a totokoa kabonganana ao kateimatoan te taetae

I nanon ara reitaki, a katereterea kaain te Betebeke taian totoko aika a karika te kerikaki ni kateimatoan aia taetae kaain te Betebeke ao kabonganana i aon Aotearoa ae e bwaniin:

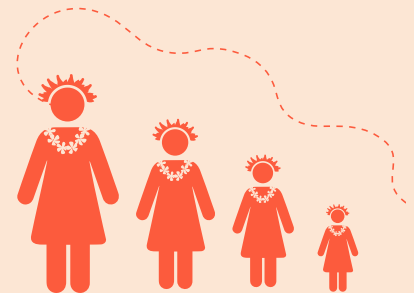


Te iango bwa te taetae n lmatang bon te taetae ae reke iai te kabwaia

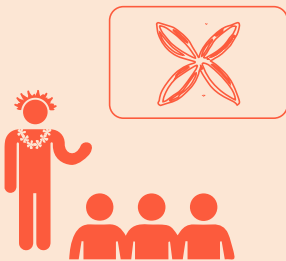
E karimoaki riki te taetae n lmatang



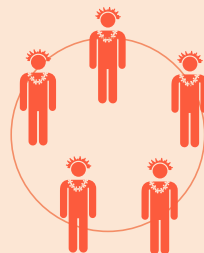
E uarereke kinakin ao atakin aia taetae kaain te Betebeke



E rang karako te maroro ma rooro aika a kakaokoro



Matoan karekeia ma boutokaia te roronrikirake ni waakinan te reirei ao kamatebwai ibukin te taetae.



Te kanganga i aon reitakia te roronrikirake ma taian lkawai



Te kainano ao te kua ngkana e kataki ni kawakinaki te taetae ma te boutoka ae e uarereke



Aia keiaki kaain te kaawa e tokitoki nakon are a na riai n rang kakamwakuri



A karako taabo ae a kona n tibwauaki ibukin kabonganana ao reiakinan taian taetae



E noraki te kanganga ibukin taetae aika a kakaokoro (te katoto, taetae ma ee aika a kakaokoro)

Kakawakin te reirei ibukin manga kamaiuan aia taetae kaain te Betebeke

Te reirei e tia n taainako ni kakina te kawai n rongorongon mwamwanangan Moana-nui-ā-Kiwa ao bon akea naba te kaokoro ngkana e irekereke ma kamaeuan taian Taetae. E ngae ngke a mwaiti taan reirei ao taan kairiri aika a rangi ni mwatai, ake a moan katerea Taetaen te Betebeke n taabo n reirei, Te Botaki n Reirei e kakatanoatai rongorongo aika a matata ao ni karaki ae Taetaen te Betebeke aki kakawaki ke aki taraki bwa a bongana. E ngae n anne ao kaain kaawa aika kaain te Betebeke, a kakooua bwa iai ana konabwai te Reirei ni kona n rangi ni ibuobuoki ni kateimatoa maeun Taetaen te Betebeke.

Teimatoan nakoraoin te kōhanga Reo, te kura kaupapa Māori ao te Wānanga, e kaota mwin korakoran tamaroan kabongan an uoua taian taetae ae a kaokoro ke ae bon ti teuana n te reirei ae e kona n reke irouia ataei, ao te roronirikake n aia atatai ao reken rabakauia man te reirei. Aio ae e teimatoa ni kaungaia taian kaawa bwa a na karekei nnen aia taetae, a na reitaki ni moantaai ibukin aia reirei, ao ni karekei taabo ibukin kabongan an uoua taetae aika a kaokoro, ke ae bon ti teuana ao karekean rinin aia taetae kaain te Betebeke n te NCEA subjects. Kabongan an uoua taetae aika a kaokoro ke ae bon ti teuana n te reirei ao kinakin ma atakin aia taetae kaain te Betebeke, n te tabo ae e kabonganaki iai te taetae n lmatang, e na karaoa te boraoi n te reirei ao e na karekea te rikirake i aon Aotearoa.

Annex 2 e kaota mwaitia ao mwaingingia ataein te reirei aika a reiakina aia taetae kaain te Betebeke ao aika a reirei aia taetae kaain te Betebeke man te ririki 2000.



**E ngae n anne, ao kaain te
Betebeke a teimatoa ni kakoaua
kakawakina ibukin te reirei bwa
ngaia ae e na reita karikirakean
aia taetae kaain te Betebeke.**



Katabeara ao reitakira ma kaain te Betebeke

Aotearoa Nutiran bon teuana aban te Betebeke ao iai tabena ae e kakawaki ni boutokan aia taetae kaain te Betebeke. E kaoti aio man rekerekena ae e raababa ma n ataki ma rimoa i marenan Aotearoa ma aban nako Te Moana-nui-ā-Kiwa.

“Solesolevaki sa itakele ni duavata” (vosa Vakaviti)

Te nano teuana ngaia boton te katiteuanaki - Aomata aika a nano teuana a kai koro bukin aia iango.



Te Waaki aio e boutokai
aia taetae kaain te
Betebeke ae e rinanon
tabeua kainibaire n aron
ae e oti n Annex 4. E
ikotaki aei ma taetaen
aaba aika:



Tokelau, Niue, and the Cook Islands

N rinanon te tua ibukin Tokelau, Niue ao te Cook Islands, aia taetae a bon kaineti nakoia n ana tabo Nutiran. Ni kateniua aaba aika i teimatoa n kaaina Nutiran ao n iai inaomataia n roko i Nutiran.

Taian taetae n ana tabo Nutiran a bane ni kawakinaki man te United Nations Declaration of the Rights of Indigenous Peoples (2010). E kamatoa nakoia Kaain te Aha inaomataia ni manga kamaeua, kamanena, karikirake ao ni kabuta rongorongoa, aia taetae, aia mamaroro, aia koaua, ao aia waaki ibukin te koroboki ao te korean rongorongo ma iango aika a kakawaki ni (Article 13).

Mwaitia aomata man aaba aika i aon Nutiran a mwaiti riki nakon aia botanaomata i aon abaia ao e koaua aio mani mwaitia aika a taetae n oin aia taetae. E kaan onoua te tai okiokin mwaitia kaain Tokelau i aon Nutiran ni kabotauaki ma ake i aon abaia, e nakon 18 te tai okiokin mwaitia kaain Niue ao e riaon aua te tai okiokin mwaitia kaain Kūki 'Āirani Māori.

Ana waaki te reirei i Tokelau, Niue ao te Cook Islands a kabongana oin aia taetae, ma iai naba te anga reirei ae e karaoaki n te taetae n Imatang man te roro n ataei. Mwiin rongorongo aika a kawakinaki (data) ibukia aika a rabakau n taetae i aon abaia e nang aki tau, ma man te rongorongo are a ikoikotaki ae e tauraoi ni kaotia bwa mwaitia taan taetae e a tabe ni kekerikaki teutana imwin teutana, ma te kerikaki aio e uarereke ni kabotauaki ma koraki ake a nako ni maeka i aon Nutiran. Niue ao te Cook Islands iai aia Language

Commission, ae a kona ni mwakuri n ikarekebai ni kakaei taian kawai ibukin kakorakoran ao te botumwaka ibukin manga kamaiuan taian taetae n te tai ae e waekoa.



Samoa and Tonga

Iai ana reitaki Samoa ma Nutiran ae e bon kaokoro. Ti ngaia te aba ae iai ana Treaty of Friendship (Reitaki n Iraorao) ma Nutiran ae e reke ngke e riki bwa te moan aba n te Betebeke n inaomata mai irouia aaba aika a mwakaroiroi n te ririki 1962. Te Treaty of Friendship imarenan Samoa ma Nutiran bon ibukin kabaeia n te reitaki, te iraorao ao te kona n reke nakoia kaain Samoa te rikirake. E rang kakawaki te taetae ni karekean aio.

Iai naba reitakia Aoteaora Nutiran ma Tonga ma rimoa. N ai aroia kaain Samoa, Tonga bon ngaia naba teuana aban te Betebeke ae e mwaiti ana aomata i aon Aotearoa Nutiran – ao e kaan 50 te katebubua mwaitin aia botanaomata aaba aika uoua aikai ae a maeka i aon Aotearoa Nutiran.

Te taetae n Samoa ao te taetae n Tonga bon ngaia taian moan taetae irouia angiaa kaain Samoa ao Tonga. Man ruaiuwa taetae aika a boutokaki n te Waaki aei, aaba aika uoua aikai bon ngaia ae a matoatoa n aia taetae ni mwengaia. E ngae ngke e a bon nang karako te rongorongona aika a kakawakinaki i aona, e bon bae n titebo mwaitia taan taetae i aon abaia ma ake a nako ni maeka n aaba tabeua. E ngae n anne, ao a aki kona ni kabotauaki taian kanganga n aaba nako n rimwian aia waaki ni karikirake Imatang ae e irekereke ma te taetae n Imatang ae ngaia ngkai te taetae ae e korakora ibukin karekean te kabwaia. I aon Samoa,

kainanoakin te taetae n Imatang bwa e na riki bwa te anga ni kairiri imwain tokin te moan rinan n reirei (primary school) ao ngaia naba ae e a totokoa rabakauia ataei te taetae n Samoa ao e a rang uarereke iai reiakinana. Ti tebo naba i aon Tonga ae e a rang rikirake te utu ni kairoroia aia ataei bwa a na reireinia te taetae n Imatang bwa ngaia ae e rang kainanoaki n te aonnaba ao are e a manga kauarereke naba iai kakawakin te rabakau n taetae n Tonga i aon abaia.²



Tuvalu, Rotuma, Fiji, and Kiribati

Aaba riki tabeua ake a boutokaki oin aia taetae n te Waaki aio bon iai naba aia reitaki ma Nutiran rimoa e ngae ngke tao e bon karako kinakia raoi ke tao ai bon tibwa te reitaki n taai aikai. Iai naba ana reitaki Tuvalu ma Nutiran ae e aranaki bwa te Statement of Partnership ae e kateretereaki iai baika a kakawaki ibukin aia reitaki,³ ao Rotuma ae e tararuaki iroun Biiti bon akea ana reitaki ae kinaki ma Nutiran, e ngae n anne ao e a tabe ngkai n rikirake te reitaki ma norakia kaain Rotuma i aon Nutiran.

Biiti bon te aba teuana ae e mena n ana korone Buritan ni karokoa 1970. E a kaman iai ana reitaki Biiti ao Nutiran ae e matoatoa ae e rekereke naba ma aroia, aia takakaro, te bitineti, te tararu, boutokakin te auti n tei, kanganga n irekerekere ma bibitakin kanoan boong ao ai COVID-19. Iai naba ana reitaki n aron ana iokinibwai ma Aotearoa ao rikiraken aia reitaki i aon te kaneweaba (tourism), te military defence, te kuakua, ao te reirei. Ana 4 n ririki (4-Year Plan) Biiti e rang boutokaki naba iroun Nutiran rinanon te Ministry of Foreign Affairs and Trade ae e a kaota naba aron te

reitaki aio are e a kaman waaki i nanon ririki aika a bati.

N irekerekere ma ana waaki te Pacific Reset, e a tia Nutiran ni kabirirakea ana ikarekebai ni kairikirake ma Kiribati.. Aio n irekerekere ma Kainibaire ibukin aua te ririki (four-year plan) ni boutoka marurungia, aia reirei ao teimatoaia ana botanaomata Kiribati.⁴

Man te tai are e a bon tautaeakanna ibon irouna Tuvalu inanon nukan ririki aika tenga ruabubua itibwi tabun (1970's), ao e a rangi n rikirake noran kakawakin reiakinan te rabakau n taetae n Imatang. E noraki kakawakin te konabwai n taetae n Imatang ibukin te reitaki ni maroro ma l-Abatera ao e a rang kabonganaki n te waaki ni bitineti ao i nanon te Tautaeaka.⁵

E ngae ngke e reiakinaki te taetae n Imatang ao te taetae n Tuvalu n te reirei, te taetae n Imatang ngaia riki ae e rang kabonganaki ibukin kairan te reirei man te koraki 4 (Year 4) ni waerake.⁶ E ngae naba ngke Tuvalu bon te aba ae e bati riki aomatana aika a rabakau n taetae n abaia ni kabotauaki ma kaain Tuvalu ake a nako ni maeka i tinanikun te aba, te kanganga ibukin bibitakin kanoan boong ao kairoroaia aomata bwa a na kitana te aba e kona n riki bwa uamaenakoia aomata ni maeka n taabo i tinanikun oin abaia.

E ngae ngke e nang bubura kabongan te taetae ni Biiti bon i aon Biiti, e a tatao ngkai riki kamanenan te Taetae n Imatang. E ngae ngke iai te tua ibukin katiteboan taian taetae n aron Biiti, Rotuma, kanoaia (descendants) taan kamwakuraki mai British Inida (Fijian Indians) ao ai kaain nako te Betebeke ao taan maeka ae akea rekerekereia ma kaain te aba (Constitution of the Republic of Fiji, 2013, p.1). Iai te raraoma bwa ngkana

akea taian koroboki aika a karaoaki ibukin te taetae ni Biiti, e na waekoa ni bua. E nang korakora naba kabongan te taetae n Imatang n taian reirei i aon Biiti ao Rotuma ao te Tautaeaka ae ngkai e katea naba ana Tua n totokoa ke ni kauarereke kabongan te taetae n Biiti ao Rotuma n taabo tabeua n aron te Auti n Tei.

Te taetae ni Kiribati ao te taetae n Imatang bon taetae aika a kinaki man kabonganaki, ma te taetae n Imatang e nang kabonganaki riki i aon Tarawa. N te ririki 2010, ao mwaitia aomata ae 3 aia ririki ni waerake bon 95,000 ao 90% ma iai ae a kona ni wareware ao ni koroboki n te taetae ni Kiribati. E moanaki te reirei ma n te taetae n te mwenga, ma n te kainibaire (Language of Instruction policy) ao e kateretereaki bwa e na riai ni kabonganaki te taetae n Imatang man te koraki 3 (Year 3). Bon ti te arona ma Tuvalu, e ngae ngke e rang korakora taan tia taetae n oin aia taetae i aon abaia ma te kanganga bwa bibitakin kanoan boong e kona ni bita aio n kaineti ma te nako ni maeka i tinanikun te aba.

Kawakinan oin ara taetae bon inaomatara

I aon te international law (Article 27 i aon te International Covenant on Civil and Political Rights) ao Section 20 n te New Zealand Bill of Rights Act, iai katabean Nutiran ibukia kaain te Betebeke ma aia taetae bwa bon inaomataia aaba aika a uarereke. E katereterea bwa koraki ake a rekereke ma aaba aika a uarereke i aon Aotearoa Nutiran a riai n aki totokoaki ngkana a kabongana aia taetae.

Taian article 29 ao 30 n te United Nations Convention on the Rights of the Child (inaomataia ataei) e rang katuruturuaki kakawakin rikiraken te ataei n oin ana katei bon ibukin kakawakin aroia. E kamatoaki n taian koro rongorongo/koroboki aikai bwa ataei a riai n inaomata ni kabonganai oin aia taetae ao n aia tabo n reirei ataei ni kabane a riai ni karineaki kinakin aia katei, aia taetae ao kakawakin te ataei ma ana utu. N te article 2 ao 3, e taekinaki ae e kakawaki riki bwaai aika a babane nanoia iai ataei bwa a na moanibwaiaki riki nakon bwaai ao a riai ni maeka n akea te katinanikuaki, n ikotaki ma ni irekereke ma aia taetae.



Image from Pacific Underground and Auckland Theatre Company's co-production of Dawn Raids by Oscar Kightley, 16 August – 3 September. Photo: Ross Brown.

Karikirakean taetaen taian aba rinanon bibitakin kanoan boong



Ka uka ma mea, ti uku aki e ulu (vagahau Niue)

Ngkana e kangaanga, karimoa moa atum - ngkana e matoa karaoakina, moana wakinana bwa mwakuriana teutana imwin teutana e raoiroi riki nakon te tei n aki kakamwakuri.

Photo: Ugas Lens

Bibitakin kanoan boong bon ngaia teuana te kanganga nakon te maiu, kawakinan aroia aomata n te Betebeke. Bibitakin kanoan boong ma kanganga aika a rekereke iai e na kona n rota aroia kaain te Betebeke, aia katei, aia taetae, rekerekeia ma aia bakatibu ao te aba ma tararuan aroia. Riki baika i aon kawaia n riki nakon aaba aika a rinano n aron Tokelau ao Tuvalu ae a kaitara ngkai te kanganga ibukin maekaia ngkana e aki nakoraai aron te mwakuri ibukin totokoan ana urubwai bibitakin kanoan boong.

N te kantaninga aio, ao ti riai ni mwakuri korakora nakon katabeara ikai i aon Aotearoa, tiaki ti ibukin tararuan kanganga aika a na riki man bibitakin kanoan boong, ma ti na totokoi ao ni karikirakea aia taetae kaain te Betebeke, aia katei ao baika a kakaraoi. E ngae ngke ara kantaninga bwa aban te Betebeke a na teimatoa n tiku n aki bua, e rangi ni kakawaki bwa Nutiran, ae aban te Betebeke, mwengaia kaain te Betebeke aika a teimatoa n rikirake mwaitia, bon te tabo ae e kamanoi ao ni karikirakei ao ni kabura i eta katein ma Taetaen te Betebeke.



Te Wa ni Kaborerei: Te Waaki ae e na kairira nakon taai aika a na roko



Te Wa ni Kaborerei Kataratara:

Karikirakean aia taetae kaain te Betebeke e karekea te rikirake i aon Aotearoa

N te ririki 2018, Imwiin te reitaki ae tabangaki are e karaoaki ma kaain te kaawa ao kaain te Betebeke aika a raka mwaitia i aon 2,500 n 2018, ao te Ministry for Pacific Peoples e kaotinao te Lalanga Fou, are e kaweneanako 4 kataratara (vision) ao te waakirake ibukiia kaain te Betebeke i Aotearoa New Zealand.

Ana moan takete aia taetae kaain te te Lalanga Fou bon Betebeke, aia katei noran karikirakean ao kinakia ae a rang

kakawaki ao a ataki bwa bwaai aika a riai i aon Aotearoa Nutiran. Katekean te takete aio e na korakora ana ibuobuoki ibukin katekean naba ana takete Lalanga Fou ake tabeua – rikiraken aia kaawa kaain te Betebeke, teimatoan ao marurungia kaain te Betebeke ma aia ataibwai, rikirakeia ao korakoraia te roronrikirake man te Betebeke.

mwiin te reitaki ae tabangaki are e karaoaki ma kaain te kaawa ao kaain te Betebeke aika a raka mwaitia i aon 2,500 n 2018, ao te Ministry for Pacific Peoples e kaotinao te Lalanga Fou, are e kaweneanako 4 kataratara (vision) ao te waakirake ibukiia kaain te Betebeke i Aotearoa New Zealand.

N ai aroia ara bakatibu, te Waaki aio e iangoaki ma ni karauaki raoi ni baireaki kanga n ai aron mwakurian te karaun ni karaunia aia taetae kaain te Betebeke man taian kaawa nako, te Tautaeaka ao rabwata aika akea rekerekeia ma te Tautaeaka. Te taratara ao te babaire ae e itiaki ibukin te waaki e na rangi ni boutoka te reitaki ni mwakuri ae e korakora ao te maroro i marenaia rabwata aika a kakaokoro. Aio ae e na karekea te waaki ae e tamaroa ibukin te wakirake ni karikirakea te taetae, karikirakeaia kaain te kaawa ao rikiraken Aotearoa.



Oin Mwakuri aika teniua ibukin karikirakean kabonganan aia taetae kaain te Betebeke i aon Aotearoa



Kinakin kakawakin aia taetae kaain te Betebeke i aon Nutiran ae bwanin

Karimoan te taetae n Imatang i aon Aotearoa e na kona ni bua iai oin ara taetae ma e noraki bwa ngaia ae e kainanoaki ibukin reken te kabwaia. Aio ae e a taona nako kakaokoron taetae n aia kaawa kaain te Betebeke ao e a karika buan taian taetae.

Ibukin karikirakean aia taetae kaain te Betebeke, ti riai ni bita aia iango kaain te Betebeke ao ake tiaki kaain te Betebeke i aon Aotearoa, bwa a na nora kakawakin ao rikiraken aia taetae kaain te Betebeke ae e na reke ma iai te toronibwai ao te kabwaia.

Aio ae e kainanoi taian mwaneka ibukin karikirakean te atatai ma te ota i aon taian kabwaia, mani kabonganan taian taetae n te Betebeke aika a mwaiti ibukin te marurung, te reirei ao aroia aomata ao ibukin naba karekean taabo ike taian taetae a kona n ongoraeaki, taetaekinaki, a na ataki nanoia ao a na karineaki.



Kamatoakin kawai ao bwaai aika a kainanoaki ibukin reiakinan aia taetae kaain te Betebeke ao te reirei n taetaen te Betebeke

E rang kakawaki bwa ti na tararua taetaen te Betebeke n uotiarake bwa a na kona aomata ni manga reitanako reireia i aon aia taetae, bwa e aki tau mwaitin taabo ake a na kona n reiakina iai te taetae aomata n roro aika a kakaokoro.

E kona n reiakinaki ao ni karikirakeaki te taetae n taabo n reirei aika a kinaki, n taian kaawa, rinanon reiakinana i nanon rooro aika a bati ao ni boni karaolan aika a taekinaki aikai ni kabane. Kamatoakin kawai ibukin reiakinan aia taetae kaain te Betebeke ao reiakinana i nanon aia taetae kaain te Betebeke, e riai n iai te karikirake i aon aei n taabo nako ao e na karekeaki naba bwaai aika a kainanoaki ni buoka rikiraken te waaki aio.



Karekean taabo ibukin kabonganan riki aia taetae kaain te Betebeke, ao n taabo riki aika a bati riki

Kaain te Betebeke e aki toki n reke irouia te rongorongo ae e matata ke e aki nang matata ae aia taetae, e aki rangi ni bongana ke ni ni kabonganaki i tinanikun mwengaia ao n aia Aro. Tiaki aio te kanganga ibukin karekean te oota i aon kakawakin aia taetae kaain te Betebeke, ma ti na riai ni karaoi tabeua mwakuri ni karekei aanga ibukin aia taetae kaain te Betebeke bwa a na kabonganaki riki ao ni kabonganaki n taabo aika a bati riki.

E irekereke aio ma nonoran, ongoraean ao kakabonganaan Taetaen te Betebeke n taabo n reirei, taabo ni mwakuri, n taian tiim n takakaro, i nanon taian kaawa, n ana rabwata te Tautaeka ao taabo ni mwakuri ma te taabo ni kaongora ao taabo ake a karaoi kanoan aia kantaninga ma aia tarena rinanon te korotamnei te anene ke a mwaiti riki ao ai te tabo ni katanoata n te rerio. E na rangi ni ibuobuoki aio ni karikirakea ao ni manga kamatoa kakawakin aia taetae kaain te Betebeke i aon Nutiran ae bwanin.

Teniuia oin te kairiri ibukin mwakuri n taai aika a na roko n ikotaki ma te karikirake



Te Tiriti o Waitangi

I nanon mwakurian te Waaki aio, te babaire, te tararua ao te mwakuri ni kakae ae e reitinako ao karikirake, e na rekereke ma te ikarekebai ni mwakuri ma ana rabwata Māori ao taan kairiri bwa e aonga n reke reireiara mai iai, karinean ao uotakirakean te waaki ibukin manga kamaiuan aia taetae kaain Māori.

Te kauoua n article n Te Tiriti - te berita ibukin kawakinan te kaubwai, e kaineti riki nakon aia taetae kaain Māori. Ngkai ngaira raoia kaain Māori n te Tiriti ke te boraraoi aei, e a reke naba te katooto ibukin aron kawakinan aia taetae kaain te Betebeke ibukin taai aika a na roko. Te kateniua n article n Te Tiriti (Oritetanga) e kaineti ma te boraai i marenaia kaain te aba ao ake tiaki kaain te aba. Ngkana e aki boraai aron te maiu, e oti bwa e aki iraki nanon aio.

E rangi ni kakawaki kabanean korakorara nakon Taetaen Te Betebeke bwa a na katanaki bwa bwaai aika a rangi kakawaki i Aotearoa ao a na boutoka marurungia, mweraoia, tokanikaia ao ni katiteboaki aia namakin ma aron bwaai aika a rinanoi kaain te Betebeke bwa kaain Aotearoa ngaiia . E karineaki te bwai ae tangiria bwa e na karaoaki te Tiriti n te waaki aio.

Te uaia n ikarekebai ni mwakuri

E riai ni boutokaki aia taetae kaain te Betebeke man waaki mai i eta ni karokoa ara utu ao kaain kaawa.

Teimatoan ana ikarekebai ni boutoka te Tautaeaka ni karikirakea kakawakin Taetaen te Betebeke, kabonganaana ao mwaitia taan taetae n Taetaen te Betebeke e a rangi ni kakawaki bwa e a riai ni waakinaki n te tai aio.

Kakoauana

Ana taraaki raoi ara kawai bwa taian babaire ni kabane ni boutoka aia taetae kaain te Betebeke ao te mwane ni buoka ae e irekerekere ma ngaia, moanakin mwakuri ao kakamwakuri a na bane ni kaotaki ao ni karaoaki man te kakae, te data ao te mwakuri ae riai (best practice). E rekereke aio ma te ataiwai ae e nano ni mwangangan nako mwakuri ni manga kamaiuan taian taetae: teia, atakina ae e kakawaki, karekeana, mwaitina ao kabongana (nora Annex 3)^{7,8}





Kamaeua

Kakorakora

Kateimatoa

Taian waaki ni mwakuri ibukin taetae aika a kakaokoro

E boutokaki aia taetae kaain te Betebeke ake n te Waaki aio ma kakaokoroia ma aron baika a kainanoi, korakoraia, ao baika a kaitara ma ngaai. E ngaie ngke e kairaki i aan te taratara ae raababa ma taian kouru ake a tia ni kateaki, te Waaki aio e na waaki ni mwakuri n aika a kakaokoro ni kaineti ma taetaen taian kaawa aika a kakaokoro.

Ni boutoka aio, a tia n kakaokoroaki taian taetae nakon teniua aekaia aika a oti i nano. Te kakaokoroaki aio e boboto i aon tarakin ma atakin taian taetae ngkai, taabo aika a mena iai aomata ao aia reitaki ma Aotearoa. Rongorongon riki te kakaokoroaki aio e kona n noraki n Annex 4.

TE MANGA KAMAIU AE KATAWE



Te gagana Tokelau



Vagahau Niue



Te reo Māori Kūki Āirani

Nakai a kinaki bwa e a rang korakora te kanganga irouia, e uarereke mwaitia aika a rabakau n taetae n oin aia taetae, e uarereke kabutanakoan te taetae nakoia rooro aika a kakaokoro, ao e rang korakora ana reitaki aia tautaeka ma Aotearoa Nutiran. Nutiran bon nneia naba nakai ae a rang mwaiti aia botanaomata iai ni kabotauaki ma te aonnaba. A na moanibwaiaki naakai ibukin manga kamaiuan aia taetae.

KAKORAKORAN TE KAONGORA & KATEIMATOANA



Gagana Samoa

Lea Faka-Tonga

Nakai a kinaki n rawatan aia botanaomata ao a mwaiti aia koraki aika a kona n taetae n oin aia taetae ma e bati kerikakin mwaitia aika a kona n taetae ao te kerikaki naba n rooro aika a kakaokoro. A na moanibwaiaki naba naakai ibukin kawakinan ao kateimatoan aia taetae.

BOUTOKAKIN ANA MWAKURI TE KAAWA IBUKIN MANGA KAMAIUAN AO KATEIMATOAN TE TAETAE



Te Gana Tuvalu



Fäeag Rotuam ta



Vosa Vakaviti



Te Taetae ni Kiribati

Nakai a kinaki bwa a uarereke aia botanaomata aika a kona n taetae n oin aia taetae ma kinakin aia reitaki ma Aotearoa Nutiran. A uarereke aia mwaiti aika a bungiaiki i aon Nutiran – ao e bon kakaokoro naba kanganga aika a kaitarai ibukin buan aia taetae.

Babaire ibukin te mwakuri



Ana babaire te Tautae a ibukin mwakurian Taetaen te Betebeke (Pacific Languages Government Action Plan)

Kaawan te Betebeke bon ngaiia taan kairiri, taan bwaibwai ao boni ngaia taan bweena aia taetae; e ngae n anne, ao te Tautae a n Nutiran ao rabwatan nako te Tautae a iai tabeia ae e kakawaki ni karaoan aroaro aika a riai ibukin aia taetae kaain te Betebeke bwa e na rikirake. E kan titebo ma mwakurian manga kamaiuan te taetae ni Māori, tokanikaia ao korakoraia kaain te Betebeke ni kawakina aia taetae ae e bon wakinako, e ngae ngke e uarereke ana boutoka te Tautae a.

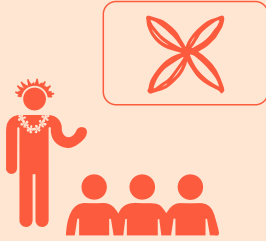
Te Waaki aio e kakaea te anga are e na kona n raranga aia waaki ma ara waaki bwa e na karekea te tamaroa nakoira ao nakoia. Te Community Action Plans, te mwakuri ae waakinaki ma kaain te kaawa, e na riki bwa ngaia boton ao riki te tabo ae e na moan waaki iai te Pacific languages Government Action Plan.

Te Waaki aio e katangaina te kawai ae e na waaki iai ma taian tabo aika a na mwakuriaki, ma kabouan rongorongon te Government Action Plan ni katoa ririki e na kabwaranakoa te karikirake ao mwakuri aika a onoti ae te Tautae a e na anai bwa kaotan boutokan te Waaki aio. Aio are e na kairaki iroun te Ministry for Pacific Peoples n irekereke ma rabwatan te Tautae a tabeua.

Te Pacific Languages Government Action Plan e boboto i aon itera ake e tararuai te Tautae a, te Reirei, te taabo n reitaki ao ni kaongora ao te Kaongora

(Broadcasting) ao te Reitaki ma Aban Tinaniku (International Relations). N angin taabo aika a mena iaan te Tautae a aikai, iai te tia kairiri man ana rabwata te tautae a ao minitan te tautae a ae a katabeaki ibukin babaire i aon te karikirake ao boutokan te itera aio.

E ngae ngkai te Action Plan e boboto i aon ana mwakuri te Tautae a (babaire aika a bubura i aon te taetae), taian babaire aika a karioaki ibukin te taetae a na kananauaki riaon are ana rabwata te Tautae a te reirei ao te kaongora ao n roko naba n taian tabo aika tiaki ana rabwata te Tautae a n aroia utu i an mwengaia ao taian kaawa (babaire aika a uarereke i aon te taetae). A kaotaki i nano taian babaire aika a onoti, taian tua ao taian anga aika a na kakoroa nanon ana rabwata te Tautae a a koreaki n itera ni ba aika imwiina.



Te reirei

- Beba n reirei aika a kinaki n aron te NCEA
- Te Whāriki ao ana Curriculum Nutiran
- Te rabakau ao te kona n anga reirei i aon te taetae
- Kabonganan uoua te taetae n te Betebeke ae a kaokoro ke bon ti teuana n te reirei
- Mwane ni buoka ao bwaai aika kainanoaki ibukin reiakinan taian taetae
- Te reirei ibukia lkawai ao kaain te kaawa
- Aron tein te reirei n te maroro i aon rongorongoni kawai ao taian katei
- Aron wakinana irouia ake kaain te aba (Indigenous Methodology).

Te Tautaeka

- Te Tua ao te kairiri
- Mwane ni buoka ao bwaai aika a kainanoaki (n ikotaki ma aia moantetere kaain te kaawa)
- Karikirakei tauan mwiin Taetae ao kakae n te data ibukin taian taetae ao kakae)
- Ana waaki te tautaeka i nanao ao karekean bwaai aika a kainanoaki
- Karikirakean te atatai (ibuakoia kaain te Betebeke ao aika tiaki kaain te Betebeke)
- Ana katei te Tautaeka ni kabuta ao ana taan mwakuri



Media, Creative Arts ao te Broadcasting

- E kaokoroaki te mwane ni buoka ibukia kaain te Betebeke
- Taian waaki aika a katuruturuaki riki iai kaain te Betebeke
- Taian waaki ibukin aia taetae kaain te Betebeke
- Teimatoan kabonganan aia taetae kaain te Betebeke
- Taian maroro ao anai nano



Te Reitaki ma Aban Tinaniku

- Te reitaki ma aban nako te Betebeke
- Ibuoka-ni-bwai
- Uaia ni waaki ao n reirei
- Buoka mai i Abatera

Mwakurian Aia Taetae kaain te Betebeke n te Kaawa

A riari ni bairea aia kaawa kaain te Betebeke bwa tera taran irovia tokanikai ao n rikiraken aia taetae. Teuana te bwai ae e kakawaki n te Waaki aei bwa te reitaki imarenaia aia utu kaain te Betebeke ao aia kaawa ni kaira manga kamaiuan aia taetae bwa e na noraki riaina ao e na boutokaki. A na ataiia bwa tera anuaia ma aia mwakuri ae e na karekea te bitaki nakoia aia utu ao kaain aia kaawa. Iai katabean te Tautaeaka bwa e na mwakuri ma taian kaawa ni boutoka korakoraia ao ni kina aia rabwata.

Ni boutokan te mwakuri aio ao Te Botaki ibukia kaain te Betebeke e na mwakuri ma kaain te Betebeke aika a kakaokoro ni katebenakoi 'Aia Babaire kaain te Kaawa ibukin Mwakuriana' (Community Action Plans) kamatataki iai anga aika a bati ao mwakuri aika a tangiria kaain te kaawa bwa a na reitanako karaoana ibukin boutokan aia taetae bwa e na teimatoa.

E na kabonganaki iroun te rabwata are e bubura riki ae te Pacific Languages Government Action Plan bwa e na kona n tibwatibwa raori taben te kaawa ao te Tautaeaka ma rabwata ake iai aia itoman ma te Tautaeaka.

Aia Babaire Kaawa ibukin Mwakuriana (Community Action Plan) a na boboto i aon te mwenga ma utu, taian aro, taian kaawa, taabo ni mwakuri ao bitineti, taabo ni bobotaki irovia te botanaomata, botaki aika tiaki ana rabwata te Tautaeaka, rabwata aika a kateaki ibukin karaoan te ibuobuoki (charity sector) ao te mwakuri ma intanete ma kabonganaan kombiuta ao tareboon digital/technology. Taian babaire, Tua ao baika a kona ni kabonganaki n taabo aikai, a bane ni kaotaki i nano.



Taian mwenga ao utu



- Babaire i aon kabonganana taian taetae, n ikotaki ma kabutanakoan taian taetae
- Babaire i aon te reirei taian taetae/ke te reirei i nanon taian taetae
- Tibwakin te rabakau i aon te kateiriki

Taabo ibukiiia te botanaomata



- E na kona n noraki irouia te botanaomata te taetae n aron taian katoto: taian signs ao bwaai aika a kaotaki
- Katanoata ni kaongora/kanako rongorongu
- Kanoa ibukiiia te botanaomata
- Kaoti bwai ao bwaai aika a kona n ira buakona aomata aika a boaki irouia art galleries, te museum ao a bati riki.

Taian Aro



- Taetae aika a kabonganaki n tain te taromauri ao n ana waaki te Aro
- Te rerei n taian taetae ao n te maroro ke te bowi
- Kaungakin kabonganana te taetae irouia ataei ao te roronrikirake
- Te kairiri ao tibwakin rongorongu i aon kanganga ma te taetae
- Karikirakean ao kabonganana bwaai aika a kainanoaki bukin reiakinan te taetae

Rabwata aika akea rekerekeia ma te Tautaeaka ao rabwata aika a kateaki ibukin te ibuobuoki



- E na kabongana bwanaana ni karaoan tuua
- E na kaunga ni boutokaia
- Karekean te boutoka nakoia te utu ma taian kaawa
- Boutokan ao kaburaan aia kakmwakuri kaain te aba (citizen)

Taian kaawa



- Aia botaki kaawa
- Aia bukamaru kaain te Betebeke
- Takakaro ma kakakibotu
- Te reitaki n te waaki n reirei, tabo ni kaneweaba ibukin rabakau ma aia bwai ara bakatibu (museum), taabo ni mwakuri ao a bati riki

Digital / Technology



- Taetae aika a kabonganaki n te maroro ke n te reitaki taian imeri (email), ao bonganana ibukin te reitaki ni maroro (chat functions), tibwakin rongorongu aika a boou, tamnei (videos), rongorongu aika a kakawaki ibukia te botanaomata man ana rabwata nako te Tautaeaka)
- Taetae aika a kabonganaki i aon te interface (navigation menu, katanoata, te notification ao a bati riki)
- Tauraoin te boutoka ibukin taian taetae rinanon te tabo ni kakaei taeka i aon te intanete (search engines) (n aron te tabo ibukin kakaean nanon taeka i aon te intanete (dictionary online))
- Tauraoin bwaai aika a kainanoaki ibukin te reirei Taetae i aon te intanete (n aron kinakin te maroro (speech recognition), te mitin ibukin te raitaeka (machine translation), kaetakin ma rinanoan te kuramwa (grammatical analysis))
- Tauraoin bwaai aika ana kabonganaki ibukin te reirei te Taetae ake a kamanenaaki i aon te intanete.

Taabo ni mwakuri ao Bitineti



- Tuan te tabo ni mwakuri i aon kabonganana taetae ma rairiaia
- Kinakin rabakaun te tia mwakuri n te taetae
- Taian banna ao taian maroro

Reken te bitaki man te mwakuri

“Aloalo tou vaka, alo tonu ki mua. Sa kilo ki peau io u tafa” (te gana Tuvalu)

Bwennarina waam taro moa ao tai mutiaki n aobuakan te kawai.

Te taeka n rabakau aio mai i Tuvalu e kauringira bwa ti na katurua ara iango i aon ara kantanninga ae ti uaiakina n aki katabetabeaki ni n baika ti kaitibo ma ngaai i nanon maiura.

Taian oi ni mwakuri aika 3, a karekeaki bwa a na karaoi boto n iango aika a rangi ni matata ibukin te wakirake.

A mwaiti kawai aika ti kona ni boutoka iai aia taetae kaain te Betebeke, ma ngkana arona bwa e na mwakuri raoi ao ti riai ni mwakuri nakon ara kouru aika a ti tearona ao n uaia ni mwakuri ma te ikarekebai ao n ataia naba bwa tera ae ti na taketenna ni karekea.



Oi ni Kouru 1: Kinakin kakawakin aia taetae kaain te Betebeke i aon Nutiran ae e bwanin

“Tautuanā ne’i vale tu’ulima le tofi (gagana Samoa)”

Taua rikiam, inaomatam, ao mwiokoam bwa na aki bwa.

Te taetae n Tamoā bon te bwai n tangira mairoun te Atua ao e riai n kateimatoaki ao n reiakinaki man te roro teuana nakon teuana.

Te reitaki are e karaoaki ma taian botaki ni Betebeke e kamatoa bwa kawaerakean kakawakin aia Taetae kaain Te Betebeke e tei bwa te mwaneka ae rangi ni kakawaki ibukin kawakinaia ao kamaeuana bwa ana aki bua. Kaain te Betebeke ao ake tiaki kaain te Betebeke a riai n nora kakawakin aia taetae kaain te Betebeke bwa e aonga n teimatoa i aon Aotearoa.

E kainanoaki bwa:

- aomata ni kabane i aon Aotearoa a na riai n ota kakawakin karikirakean aia taetae kaain te Betebeke ibukin marurungia, aroia ao tokanikaia kaain te Betebeke ao aron ibuobuoki nakon rikiraken Aotearoa
- e na noraki taetaen te Betebeke aika a bati bwa te bwai teuana ae e riai ni kawakinaki ao ni boutokaki, riki n te reirei ao te mwakuri
- e na kinaki naba n te tua bwa aia taetae kaain te Betebeke bon teuana te taetae ae e rang kakawaki i aon Aotearoa

A kaman te tautaeka ma kaawa ni waaki bwa ana kakora nanon aio:

- E na kabatia te karikirake i aon wikin aia taetae kaain te Betebeke (Pacific Languages Weeks) ni bukamarua ao ni kabura aia taetae kaain te Betebeke i aon Nutiran ae bwanin [MPP]
- E na kinaki/kariaiakaki aia taetae kaain Niue ao Tokelau bwa kanoan te reirei n te National Certificate of Educational Achievement [MoE]

Ni buoka kakoroan nanon te mwakuri aio, ti na kakaai aanga bwa:

- E na karaoaki te tua ibukin katean te rabwata i aon aia taetae kaain te Betebeke (Pacific Languages Commission) ao n anganaki kinakina [MPP]
- E na karaoaki kanoan te maroro i aon te mwakuri ae e na kaota atakin ao kinakin kakawakin aia taetae kaain te Betebeke ao baika a kona n reke aika a tamaroa man taetae aika a mwaiti [MPP]
- Te mwakuri ma aban te Betebeke ni karekei aanga ibukin atakin baika a kakawaki aika a kona n reke ni kabonganana taetae aika uoua [MPP & MFAT]

Ti na ataia bwa iai te wakirake ngkana...

- E a kerake mwaitia kaain te Betebeke ao tiaki tii kaain te Betebeke n ota ao n ata kakawakin taetae mwaiti, ao te kona ni koroboki ao wareware ni kabonganana uoua te taetae n te Betebeke
- E a kerake mwaitia kaain te Betebeke ao aika tiaki kaain te Betebeke n ota ni kakawakin kabonganana uoua te taetae n te Betebeke aika a kaokoro ke bon ti teuana n te reirei
- E a kerake atakin kakawakin oin aia taetae kaain te Betebeke aika a kakaokoro i aon Aotearoa
- E a kinaki kakawakin aia taetae kaain te Betebeke i nanon te tua ao n ana mwakuri nako te Tautaeka
- E a kinaki ao e ataki kakawakin te rabakau n taetae n aia taetae kaain te Betebeke n te reirei ao n taian tabo ni kamwakuri
- Te reitaki are e karaoaki ma taian botaki ni Betebeke e kamatoa bwa kawaerakean kakawakin aia Taetae kaain Te Betebeke e tei bwa te mwaneka ae rangi ni kakawaki ibukin kawakinaia ao kamaeuana bwa ana aki bua.

Oi ni Kouru 2: Kamatoakin kawai ma karekean bwaai aika a kainanoaki ibukin reiakinan aia Taetae kaain te Betebeke ao n reirei n aia Taetae kaain te Betebeke

Pukepuke 'a fufula (lea faka Tonga)

Kamatoa taua te beeki ae bubura, ma ni marikarika

Te taeka ni kaikonaki aio e kaineti ma uarokoan te kouru rinanon te mwakuri n aki bwara n nano, ti riai ni kababanei korakorara ni kamatoa ara taetae ao ni kakaai anga nako n reirei ao n tibwatibwai bwa aonga n aki bua.

Ngkai ti tabe ni mwakuria kakawakin ma kinakin aia taetae kaain te Betebeke i aon Aotearoa ae bwanin, e riai ni boutokaki iango ni karikirake ao babaire ni kakerakei aanga ma kawai ibukin te reirei, ao te reirei rinanon kamanenakin aia taetae kaain te Betebeke. I nanon ae e a tabe ni kinaki ao ni mwannanoaki aia taete kaain te Betebeke e na bae naba n kerake kainanoan karikirakean taian rabakau n taetae i nanon te reirei, n taiani kaawa ao n taiani mwenga. Te bwai ae e raioiroi bwa a rangi ni bati aron mwakurian taian katoto n reiakinan taian taetae n te reirei, taiani kaawa ao n taian mwenga ae a kona ni karaoaki nakon riki ae a karioaki.

Aio e kainanoi:

- karekean kawai aika a na kona ni mwakuri raoi ibukin te reirei te Taetae, n reirei ao n taian kaawa (education and community settings) bwa aonga ni boutokaaki aomata bwa a na rikirake ao n reitanako reireia;
- Ni bon waaki ni karekei babaire ibukin taai aika a kakaokoroaki, ibukin kawai n anga reirei aika a kamanena taetaen te Betebeke n angiin aia tai (immersion education) ke n anga reirei n taetaen te Betebeke n iteran aia tai n reirei (bilingual education), bwa a na mwanea aia Taetae kaain te Betebeke ma aia katei ao ni kaota te kaboraoaki n te reirei; ao
- kaeka nakon kainanoan riki bwaai aika a na kona ni kabonganaki ni boutoka te rabakau, te ataibwai ao te wanawana i aon aia taetae kaain te Betebeke.

E a kaman mwakuri te Tautae ma taian kaawa bwa ana kakoro ni nanon aikai rinanon:

- karekean mwaane ni buoka ibukin anga reirei ibukin Taetaen te Betebeke aika a kabonganaki Taetaen te Betebeke iteran aia tai n anga reirei (Bilingual) ke n angiin aia tai n anga reirei (Immersion) man 2022 [MoE];
- Waakinakin ao barongan te itoman ni karekei taabo n anga reirei ibukia te roro ake a uareke (Early learning) n taraia bwa a na bane ni butimaeaki reeti ke aomata n aekakia nako, e na kona n reitinako waakinana, ao e na bon rangi n mwakuri man bongana raoi [MoE]

- Karekean te reitaki imarenan taian kaawa ma reirei n aia kaawa ao taian katenrinan bwa a na kona ni kareke te anga are a na kona n anga reirei aika a tauaki mwii (accredited) i aon Taetaen te Betebeke nakoia ataein te kauarinan [te kaawa ma a na boutoka te MPP]
- Mwakurian te Centre for Pacific Languages bwa a na kona n teimatoa ni katauraoi reirei ibukin taetaen Betebeke aika a aki kaboaki i aon te intanete (online)
- Moanibwaiian taian kataumwne ibukin aia reirei lkawai ao kaain te kaawa ae boboto i aon boutokan aia taetae kaain te Betebeke (riki n aia tabo) bwa e na teimatoa ao e na rikirake [TEC, MoE]

Ngkana ti na kakoro ni nanon ara kouru, ti riai n katai anga aika:

- A na karaoaki reirei aika a na bongana ao ni kaineti raoi ma taan reiaki aika Master Apprentice Language Learning programmes ae a na katoaki ikawai aika a rabakau i aon te taetae ma ake taan reiakinaki [MPP]
- Kamatoan te reitaki ma taabo ake a tabe ma taian taetae n aban nako te Betebeke ao ni kakaai anga ni kona n tibwauai karaoan bwaai n reirei ke kamanenakin bwaai n reirei [MPP & MFAT n reitaki ma te MoE n te tabo are e noraki riaina iai]
- Ni karekei ibuobuoki nakoia aomata bwa ana reirei ao ni kabaai araia bwa taan rerei ngaia ibukin Taetaen te Betebeke ni boutokaia bwa

a na kona ni kakoroa nanon te kantaninga ibukin te Taetae n imatang (English language requirements) [MoE]

- E na rikirake kinakin kawai ibukin reiakinan taetae i nanon reirei aika katenrinan (Tertiary) ibukin karikirakean te rabakau ibukia taan mwakuri n te reirei, taan raitaeka n te koroboki, taan raitaeka n te taetae ao mwakuri riki aika a rekereke ma aekaki aikai [MOE/TEC]

Ti na ataia bwa iai te rikirake ngkana...

- Karakai mwaitin taian anga reirei aika a noraki bwa a na rangi ni bongana ao n tauaki mwii man barongaki raoi (formal) ke n aki rangi ni barongaki raoi (informal) ibukin karinan aika a kakaokoro
- Biriraken mwaitin taian reirei aika a reirei te taetae n te Betebeke angiin te tai (immersion) ke n iteran te tai ao iterana te imatang (bilingual) ibukiiia te roro aika a uarereke (early schooling).
- Rakan mwaitin taabo ao waaki aika a waakinaki ibukin reirei taian taetae n taian kaawa, n ikotaki ma anga beeba ao karekean kawai ibukin taian kareke mwakuri

- A mwaiti riki taabo n reirei aika a boboto i aon Taetaen Betebeke ibukin reiakinakinaia aomata bwa a na riki bwa taan reirei
- A mwaiti riki taan reirei aika a rang ni mwatai n teuana ke e raka i aon teuana aia taetae ni Betebeke riki n tabo ake anga reirei ibukia ataei ake a uarereke (early learning) ake a anga reirei iteran aia tai n taetaen te betebeke ao iterana n imatang (bilingual) ke angiin te tai n Taetaen te Betebeke ao teutana te imatang (Immersion)
- A mwaiti riki aomata ake a reireiniia taetaen te Betebeke, n ikotaki ma taabo ake a mena iaan a na kainibaire te reirei (formal education system)
- E a raka mwaitia ake a taekinna bwa a kona n reke irouia bwaai n reirei ibukin Taetaen te Betebeke n taabo n reirei, ni mwengaia, n aia kaawa ao i aon te intanete (online)
- E birirake mwaitia aika a reirei aia taetae i bon i marenaia ibukin roro aika a kakaokoro

Below: Photo: NZ Kiribati National Council event. Photographer: Joseph Rejante.



“Ti riai n karikorikoi korakorara n kamatoa ara taetae.”

Oi ni Kouru 3: Karekean anga ma itera aika a bati ibukin Taetaen Betebeke bwa a na rang kakamanenaaki riki ao n tabo riki tabeua

“A‘māūr‘ākia ma putua ‘ou fāeag ta ‘e ‘ou fātu la se mao” (fāeag Rotuām ta)

Kabanea nanom ni kamaeua ao kabwebwerakea am taetae bwa e na maeu ao n ikeike n taabo nako are ko nako iai.

A kona n noraki kakawakin taetaen te Betebeke ao ni korakora kabonganaia n taian mwenga ao taabo n taromaui ni kabuta Aotearoa, ma ngkana aki nang noraki kakawakia ao n aki nang kabonganaki n angiin taabo tabeua, ao ti kona n teimatoa n noora naba te kanganga ma iai nakon mweenga ao taabo n taromaui. Ara kawai nakon taetaen te Betebeke bon boutokana bwa e na kabonganaki n taian mwenga ao te kaawa n ikotaki ma akeke a tia ni mwaneweaki – te Tautaeaka, aban tinaniku ae ti rekereke ma ngaai, te reirei, taabo ni kaongora ao ni katanoata, taabo n taromaui, reitaki ma aban tinaniku, ao taabo ni mwakuri.

Aio e kainanoa:

- boutokaia utu nako bwa a na reitanako oin aia taetae i nanon mwengaia;
- kakaeen kawai ae a na kona n noraki riki taetaen te Betebeke, e na noraki riki kakawakina ao ni kabonganaaki n taabo are e rawata kabonganana te taetae n Imatang iai, riki n taabo ni mwakuri ao taabo n reirei;
- katerean taetaen te Betebeke bwa e na noraki n taabo nako (te taetae ae ti kona n noria ni katoa bong n taabo nako – taian kanikinaa/ katanoata/kaongora);
- boutokan, karinean ao karikirakean raioiroin katanoata n aia taetae kaain te Betebeke; ao
- taraia bwa taabo n rairi taeka n te koroboki ao te taetae a tatauraoi ao ni kona ni waekoa ni karekeaki n taainako.

Te Tautaeaka ao taian kaawa a kaman kakamwakuri nakon kakoroan nanon aio man:

- Rairan rongorongon COVID19 nakon aia taetae kaain te Betebeke bwa a aonga taian kaawa ni marurung, a na kamanoaki ao ni kakaongoraaki taekan butin te aoraki aio n te aonnaba [MPP]

- Karaoan taian waaki ibukin taetae aika a kakaokoro i aon Auckland (te Nga Reo o Tamaki Makarau) ibukin kateimatoan ma kakorakan aia taetae kaain te Betebeke (COMET)
- Karikirake i aon te katanoata ni kabonganana aia taetae kaain te Betebeke – Pacific Media Network (MCH)
- Karekean reiakinaia ao karikirakeaia taan tia reirei aika a mwakuri n aia reirei ataei aika a uarereke bwa a na kona ni karina n aia anga reirei kinakia kaain te Betebeke, aia taetae ao aia katei i nanon te umwanreirei rinanon te Tapasa (cultural competencies framework for teachers of Pacific learners) (MoE)

Ngkana ti na karekea ara kouru aio, ti riai n tarai iteranako aikai:

- E na karakaaki mwaitin taabo n reirei aika a anga reirei ao ni kamanenai taetae n samoa ao n Tonga n ni n angiin te tai ke n iteran aia tai (bilingual and immersion units) bwa a na boutoka kamanenaa taian taetae n te reirei [MoE]
- Ti na karaoi kairiri ma aika a kantaningaki ibukin buokan rairan bwaai aika a kakawaki, nakon aia taetae kaain te Betebeke n ana tabo te botanaomata (MPP)



- Ti na karikirakea mwaitin aia taetae kaain te Betebeke n taian katanoata ma kaongora n te tabo ni kanakobwana - te mainstream broadcasting (MCH)
- Ti na kamwaita kanoan ana waaki te kaawa i aon te intanete (online) ae e boboto i aon reiakinan ma kabonganan taetaen te Betebeke (te kaawa ni boutokaki man MPP)
- A mwaiti riki aomata ae a taekinna bwa a kona n reke irouia rongorongo aika a kakawaki rinanon n taetaen te Betebeke.
- E a korakora riki noran aia taetae kaain te Betebeke n ana tabo te botanaomata riki taian kanikina (signs), baika a koreaki (labels), katanoata ao a bati riki
- E a rawata riki ngkai ana waaki te kaawa aika a boou ibukin karekean riki aanga ibukin te taetae n kawai ao tibwakin te taetae
- Keraken mwaitia kaain te Betebeke aika a kona n taetae n oin aia taeka

Ti na ataia bwa iai te wakirake ngkana...

- E a rikirake kabonganan aia taetae kaain te Betebeke n aron ae a bon taneiai iai ao n ana burokuraem te social media.
- E a kerake mwaitin ana rabwata te Tautaeka ae e kateimatoa rairan taian rongorongo aika a kakawaki nakon taetaen Samoa ao Tonga.
- E ribotinaki bwa e a rawata ngkai kaain te Betebeke n ikotaki ma ataei ae a moanna ni mwengaraoi ngkai ni kabongana aia taetae kaain te Betebeke n aia reirei/ n aia tiim n takakaro ao n taabo ni bobotaki.



...e na maiu ao n kakabonganaki n taabo ake ko nako iai

Kamaeua ao kabwebwerakea am taetae mai nanom...



**“E kamatoai reitakira ma abara ake
ti roko mai iai ao anuara ara taetae.
E karikirakea aeuakinan ara katei
ao reitakira ma ara ikawai ao ao
aira ikawai ake a tia ni kitaniira”**

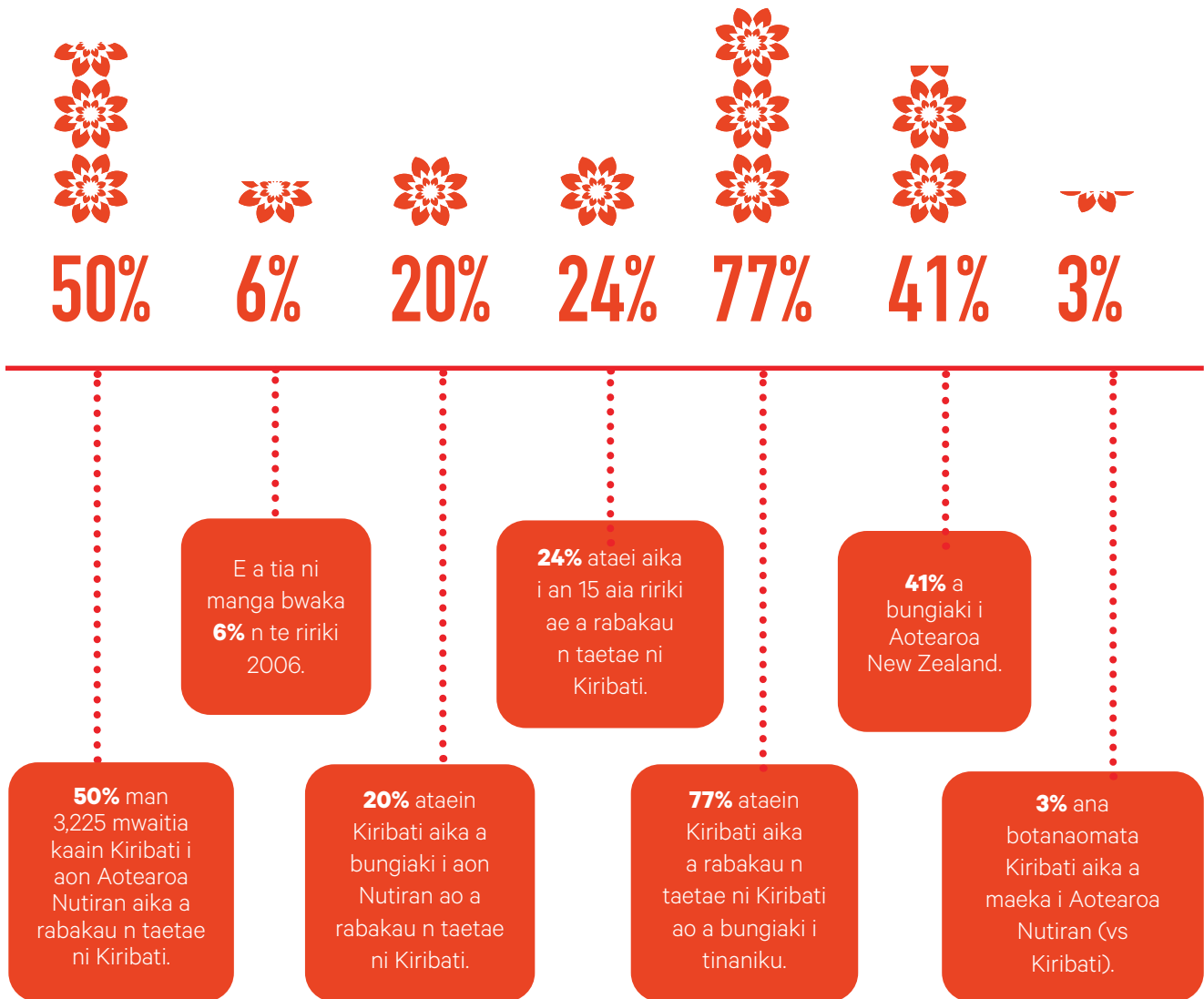
AIKAI TAETAETAE MAN TE BETEBEKE

“Ara taetae bon kinakira”

Kabwarabwarakin taian taetae n kaawa aikai, a karekea riki te iango i aon aron te taetae n taai aikai, taian kangabuaka ao ai aanga aika a tamaroa ibukin teuana ma teuana te taetae i nanon te Waaki aio. Kabwarabwara aikai, a karaoaki imwin te reitaki ae e teimatoa ni wakinako ma taian tiambion n te taetae ao taian kurubu man taian kaawa ibukin te mwaneka ae e bongana i aon karaoan **Taian Kawai ibukia Kaawa n Wakinan taian Taetae n Te Betebeke.**

Te taetae ni Kiribati

“Ara taetae bon ngaia ae e kaota kinakira bwa antai ngaira. Ngkana ti kuba ni mwaie n oin ara mwaie ae aneneaki n lmatang, ti kabua te namakin ae antai ngaira. Ngkai Kiribati te moan abamakoro ae e na rotaki ni bibitakin kanoan boong (climate change), e na bon akea te tabo ae ti kona ni manga okiria ike ara taetae ni Kiribati e ribanaki ma iai ao bon ngaia oin ara taetae”



Data: NZ Census, 2018



**Ana botanaomata Kiribati
bon te kabanea n uarereke
i Aotearoa Nutiran bwa ti
3,225 mwaitia. Angiia kaain
Kiribati a maeka i Auckland
ao i Wellington.**

Ni katoa ririki ao Aotearoa New Zealand e butimwaeia 75 kaain Kiribati bwa a na maeka ikai, ma e ngae n anne ao e a rikirake mwaitin ana botannaomata Kiribati aika a bon bungiaiki i aon Aotearoa Nutiran. Kiribati bon ngaia teuana mai buakon aban te Betebeke ae e kona n ira te reirei i aon reiakinan uoua te taetae. Aio e bon mena i Auckland ao e kateaki n te ririki 2019.

**BOUTOKAKIN TE MWAKURI MAN TE KAAWA KE
IROUIA AOMATA IBUKIN MANGA KAMAUIUAN AO
KATEIMATOAN TE TAETAE**



I nanon tain te maroro i aon Te Wa ni Kaborerei, ao aia kaawa kaain Kiribati, a katerei baika a kakawaki irouia aika a bwaka i aan teniua oin mwakuri (key actions areas). Aikai a na buoka reitinakon te ikarekebai i aon te Taetae ni Kiribati Community Action Plan. N aron:

Oi ni Kouru 1: Kinakin kakawakin aia te taetae ni Kiribati i aon Aotearoa ae bwanin

- Atai mwakuri aika a anainano ibukia taan taetae.
- Bukamarui ao kinai taabo n reirei ao taabo ni mwakuri ma kurubu aika a boutoka ao a bukamarua te taetae ni Kiribati.
- Kamatoa te reitaki ma te tautaeka ni Kiribati ibukin karaoan taian tua ibukin boutokan te taetae ni Kiribati.

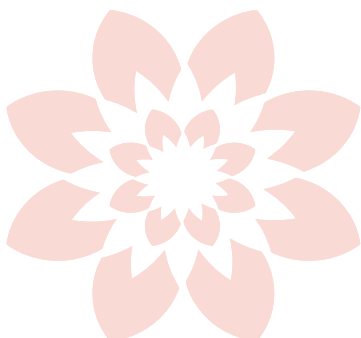


Oi ni Kouru 2: Kamatoakin kawai ao karekean bwaai aika a kainanoaki ibukin reiakinan aia te taetae ni Kiribati ao te reirei i nanon aia taetae kaain te Betebeke

- Karaoan taian anga reirei i aon te taetae i nanon kaawa ao ni bon te tabo n reirei
- Te aroaro i nanon te mwenga ae e na boutokaia kaaro bwa boni ngaia taan reirei n te mwenga
- Bwaai aika a kainanoaki ibukin reiakinan te taetae (resources) a tauraai n tainako i aon te intanete ke n te tabo n tango boki (library)
- A na boutokaki tinaia ataei aika a tiku n te mwenga bwa e na reke aia reirei ke rabakauia




Oi ni Kouru 3: Karekean taabo ibukin kabonganan riki aia te taetae ni Kiribati, ao n taabo riki aika a bati

- Bitakin wikin te taetae ni Kiribati nakon ae tain te reirei ao a na kaungaki aomata aika tiaki kaain Kiribati bwa a na reireinia taeka ao kiibu aika a bebete



Reitakira ma tabeua waaki aika a kakawaki

E na rikirake n tamaroa aia taetae kaain te Betebeke, kateia ao kinakia ngkana ana rabwata te Tautaeka ma rekerekena nako ao rabwata riki tabeua a bane ni kaai ni mwakuri i marenaia, ao ni mwakuri naba ma taian utu ao aia kaawa kaain te Betebeke. Te Waaki aio e ira raoi ao e boutokai tabeua boton te waaki ibukia kaain te Betebeke aika a kakawaki rinanon te Tautaeka. E na kanga ni kamwakuraki aio, e na bon oti man te Pacific Languages Government Action Plan. A kabwarabwaraki i nano tabeua katoto aika a kaota rekereken Waaki aikai ma ana waaki te Betebeke (key Pacific strategies).

<p>Te Botaki ibukia kaain te Betebeke</p> 	<p>All-of-Government Pacific Wellbeing Strategy</p> <ul style="list-style-type: none"> e rin n ana riboti te Lalanga Fou aron karikirakean te kantaninga ibukia kaain te Betebeke Kouru 1: Karikirakean aia taetae, aia katei ao kinakia kaain te Betebeke
<p>Ministry of Education</p> 	<p>Action Plan for Pacific Education 2020-2030</p> <ul style="list-style-type: none"> Te moan bitaki (1) – Te uaia ni mwakuri ibukin karekean buokaia kaain te Betebeke aika a reiakinaki ma aia utu Te mwakuri ae riai ni karaoaki bwa karaoan te tua iaon reirei aika a kamanena Taetaen te Betebeke n angiin aia reirei ao teutana te Imatang ke a kamanena Taetaen te Betebeke n iteran aia tai ao are iterana te Taetae n imatang (bilingual) n tain aia anga reirei, n reirei ibukiia ake a uarereke ao n reirei <p>Statement of National Education and Learning Priorities</p> <ul style="list-style-type: none"> E na taraki raoi bwa taabo n reirei a mano ibukia aomata ni kabane, akea te kakaokoroaki iai ao akea te ioawawa E korakora te kantaninga ibukia taan reiakinaki, ao boutokan aikai bon man te ikarekebai ma taian utu ao taian kaawa ni karaoa te reirei ae e kaineti ma kainanoia, ao ni kateimatoa kinakia, aia taetae ao aia katei Kauarerekean bwaai aika a na totokoa te reirei irouia aomata ni kabane, n ikotaki ma kaain Maori ao te Betebeke, taan kan reiakinaki aika a toara ke a mwaku ao naake a ana kainanoa te ibuobuoki ibukin reireiai <p>Tertiary Education Strategy</p> <ul style="list-style-type: none"> E a tia te Tautaeka n anga nanona bwa e na karikirakea ao e na boutoka karaoan taian waaki ma kawai ibukin reiakinan aia taetae kaain te Betebeke Taabo n reirei aika a rietata (Katen rinan) ke riai ni mwakuri n: <ul style="list-style-type: none"> noora kakawakin taetae aika a kabonganaki irouia kaain te Betebeke ma Māori, ao ni karekei aanga ibukin kabonganaia ao kateimatoakia te ikarekebai ma taabo n reirei, taian utu, aia utu kaain te Beketebe, taian kaawa ao taabo ni mwakuri ni iangoi aron anga aika a na kona ni boutoka te tokanikai n tain mwaingiin man te tabo teuana nakon te tabo teuana bwa aonga ni totokanikai taan reiakinaki n te reirei ao taian kataneiai.
<p>New Zealand Qualifications Authority</p> 	<p>Takiala Pasifika 2020-2023 Action Plan for Pacific Learner Success</p> <ul style="list-style-type: none"> Boutokaia taan ttia reirei taetaen te Betebeke Karaoan ao tuoan aia taetae kaain te Betebeke

<p>Ministry for Culture and Heritage</p> 	<p>Pacific Media Network and Pacific languages broadcasting</p> <ul style="list-style-type: none"> Boutokan taian burokuraem ibukin taetaen te Betebeke
<p>Education Review Office</p> 	<p>Pacific Strategy – Driving Success for Pacific Learners 2019-2022</p> <ul style="list-style-type: none"> A mwengaraoi n aia taetae, aia katei ao kinakia ataein te reirei aika kaain te Betebeke
<p>Ministry of Foreign Affairs and Trade</p> 	<p>Pacific Resilience approach</p> <ul style="list-style-type: none"> Karekean ao kateimatoan aia taetae kaain te Betebeke, aia katei ao rikiaia. E teimatoa ni kinaki bwa te bwai bwai ae e tia ni kakoauaki n taian aono bwa e na moanibwaiaki (New Zealand's Pacific Engagement: From Reset to Resilience CAB-21-MIN-0401) Manga kamaiuan te taetae bon te katoto ni kaota te uaia ni waaki ma tua ibukiiia kaain te aba ike a boutoka iai te waaki ibukin bwaai aika a tamaroa ibukin te Betebeke Pacific Regional and Pacific Country Four-Year Plans
<p>Ministry of Health</p> 	<p>Ola Manuia: Pacific Health and Wellbeing Action Plan 2020 – 2024</p> <ul style="list-style-type: none"> Boutokaan te katitebooaki ni kanakoan taian rongorongo ma reitaki nakoia kaain te Betebeke n irekereke ma taian kairiri i aon COVID-19 bwa a na eti raoi rongorongo aika a reke irouia kaain te Betebeke n te tai ae e riai Karekean ao boutokan te tabo ni kurakua ae e karaoi ana waaki ni kaineti ma ana reeti ma katein te aomata ae e katerea iai otaia ma reitakiia ma katein te Betebeke, taraana ni kabuta, mweraoina ao ma ni katebenakoi mwiina aika kabanea n tamaroa
<p>Department of Prime Minister and Cabinet</p> 	<p>Child and Youth Wellbeing Strategy</p> <ul style="list-style-type: none"> Ataei ao te roronirikirake, a kukurei ao a marurung (kateimatoaia ni karorakora aia iango aika a tamaroa ibon ibukiiia ao ni kona ni kaitarai kanganga aika a rinanoi, ao ni marurung aia kantaninga) Ataei ao te roronirikirake, a reirei ao a tabe n rikirake (a reirei ao a tabe n rikirake rabakauia ao aia konabwai n te reirei, a reke aia atatai ni karaoan bwaai ao a unga ni karekei baika a riai ibukia) Ataei ao te roronirikirake, a mwannanoaki, a karineaki ao a reitaki (aikoa kaitibo ma te kakaokoroaki, a tomaki ma aia katei, aia taetae, aia koaua ao kinakia, a namakina mwannanoaia ao a kakawaki i nanon mwengaia, aia reirei, n aia kaawa ao i online)
<p>United Nations</p> 	<p>Sustainable Development Goals</p> <ul style="list-style-type: none"> E na mwaneaia te koraki ao e na boraai aron reken te reirei ae e kororaoi ao e na kaungaki te reirei n tainako ibukia rooro ni kabane E na teimatoa te marurung ao ni kaungaki te aroaro ae e riai nakoia rooro ni kabane

Karaoana, tutuoana ao rinanoana

E na boutokaki karaoan te Waaki aio man te *Pacific Languages Government Action Plan*. N katoa ririki ao e na kakabouaki rongorongona (updated) ma taian waaki aika a boou ao karikirake ni katoa raunin te kataumwane (budget cycle). E na kari- aia te bibitaki ni kaineti ma norakinga bwa e nga ae e mwakuri ao ia taabo aika a kainanoaki riki mwakuriaia. E na kakaokoro tain mwakuriaia ao e nakon naba riaina. e na kariaia iango aika a boou ao burokuraem bwa a na tuoaki ao ni mwakuriaki riki. E na tuoaki rikiraken waakina ao n nonoraki mwiina n aron ae e oti inano::

Te Wa ni Kaborerei	
E kakabouaki rongorongon Te Pacific Languages Government Action Plan ni katoa ririki	
2023	E na tia ao e nang riai ni mwakuriaki te Strategy & Action Plan Karaoan taian moan waaki (baseline measures)
2024	Rinanoan ao karinan taian waaki aika a boou man te Kataumwane 24 (Budget 24)
2025	Rinanoan ao karinan taian waaki aika a boou man te Kataumwane 25 (Budget 25)
2026	Rinanoan ao karinan taian waaki aika a boou man te Kataumwane 26 (Budget 26)
2027	Te tutuo n nukan te waaki (Midpoint check) Tuoan te rikirake ni kabotauaki ma te moan waaki (te data i aon te ware-aomata, ana data te Leo Moana)
2028	Rinanoan ao karinan taian waaki aika a boou man te Kataumwane 28
2029	Rinanoan ao karinan taian waaki aika a boou man te Kataumwane 29
2030	Te tutuo n nukan te waaki (Midpoint check) Tuoan te rikirake ni kabotauaki ma te moan waaki (te data i aon te ware-aomata, ana data te Leo Moana)
2031	E na moanaki te kareke iango ibukin te Waaki are imwina
2032- 2033	Rinanoan te Waaki ni kaokan te mwakuri n are imwina

Annex 1: UNESCO Classifications

Te botaki ae te UNESCO, e kabongana ruaiua te karinan n tua te kanganga ae e na riki nakon te taetae ao kawaekoana n kore-aki mwiia. A kabongana aio bwa e na akea teuana te karinan ae e na kabonganaki n tua maiuraoin te taetae.

Taian karinan aika ruaiua mwaitia:

Bota-n-iango	Bwa ae e rekereke ma mwakuriana/karekeana (Factor)
Maiun te taetae	Kabonganakin te taetae irouia rooro aika a kakaokoro (antai te roro ae e kabongana te taetae)
	Mwaitia raoi taan kamanena te Taetae (speakers)
	Mwaitia taan taetae i nanon te mwaiti ni kabane
	Aron tein te taetae ae e kabonganaki n taabo (e kabonganaki ia te taetae ao ni mwaitia tain kamanenaakina)
	Te kaeka nakon taabo aika a boou ao te media (bwa te taetae e kabonganaki n taabo aika a boou n aron te internet/social media)
	Bwaai aika a kona ni kabonganaki ibukin reiakinan te taetae ao te wareware ma te koroboki (kaotin reirei aika a kabongana uoua te taetae n te Betebeke aika a kaokoro ke ae bon ti teuana ma bwaai aika a kainanoaki ibukin boutokan te reirei aio, literature, taian dictionary, tararuakin taian grammar, karaoan taeka aika a boou ngkana a kainnakoaki)
Taian kantaninga ao tuua ibukin te taetae	Ana kantaninga ao ana tua te Tautaeka ao babairean taian taetae, n ikotaki ma kabonganakina ao kinakina n te tua (bwa iai taian tua aika a matata ke kantaninga aika a ataki ibukin te taetae – e kona n titebo boutokakina irarikin te taetae ae taotira kabonganana ke ngkana iai te mwakuri ae e totokoaki)
	Aia kantaninga aomata ke taian kaawa ibukin oin aia taetae (bwa ni kabane kaain te kaawa a kina ao a ataa kakawakin aia taetae ao a kan noria bwa e na kabonganaki ke akea te raraoma ngkana e a mauna te taetae ke e nang kabonganaki riki te taetae ae e a nang kabonganaki ngkai)
Katawean tatauan mwiin rongorongon (urgency for documentation)	Mwaitin ao tamaroan tauan mwin rongorongon (norakina bwa tao mwaitira ngkai taian boki ni grammar ao dictionary, taian koroboki, ao bwaai aika a na kona ni kabonganaki ibukin te taetae ao ai taian ao mwaiti kurikurin rawerawe n te bwana ao tamnei aika a rang tamaroa)

Taian karinan aka i eta a tauaki bwia i aon 1-5 n te iango bwa 5 e kaotia bwa e 'mano' ao te '0' e kaotia ae e a mauna. Botan te bwi e na kaotinakoia bwa e mena n te karinan ra.

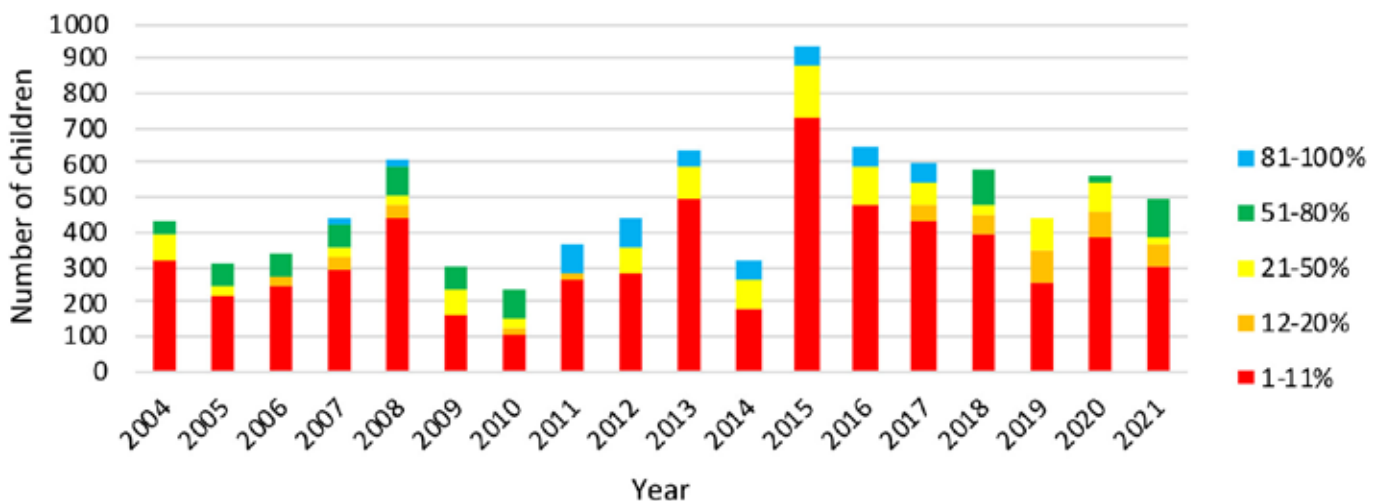
Ngkana ko kan wareka riki rongorongon te katautau ibukin karinan aika ruaiua aikai, nora: Language Vitality and Endangerment (unesco.org).

Annex 2: Kabaeara irouia taan reiakinaki n taian reirei ae angi Taetaen te Betebeke ao teutana te taetae n imatang (Immersion) ao te anga reirei n iteran te tai Taetaen te Betebeke ao n Imatang (bilingual) ao reirei riki tabeua ibukin taetaen te Betebeke n taian reirei

Aia reirei ataei aika a uarereke (Early Learning)

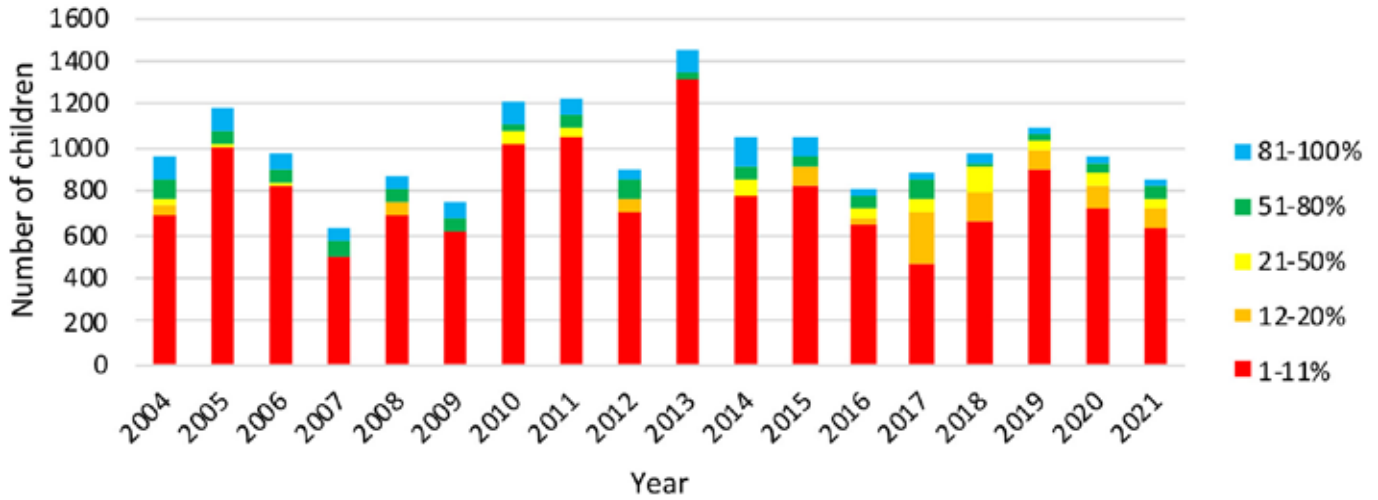
Taian tamnei (graph) aikai a kaota mwaitia ataei aika a kabaei araia n reirei ae e kabonganaki iai uoua te taetae n te Betebeke aika a kaokoro ke bon ti teuana. Te key e kaota kakaokoron karinan ni kabonganana te taetae n taian reirei aikai. Te katoto, 81-100% te kabanea n rietata ni karinan ae e kaotia iai bwa te taetae n te Betebeke e kabonganaki n te anga reirei 81-100 te katebubua angiin te tai. N aia reirei ataei aika a uarereke ae e mwakuri i aon 1-11% a kabanea angin aia tai n taetae n Imatang, ao ti tabeman ae a kabongana aia taetae kaain te Betebeke.

Gagana Tokelau



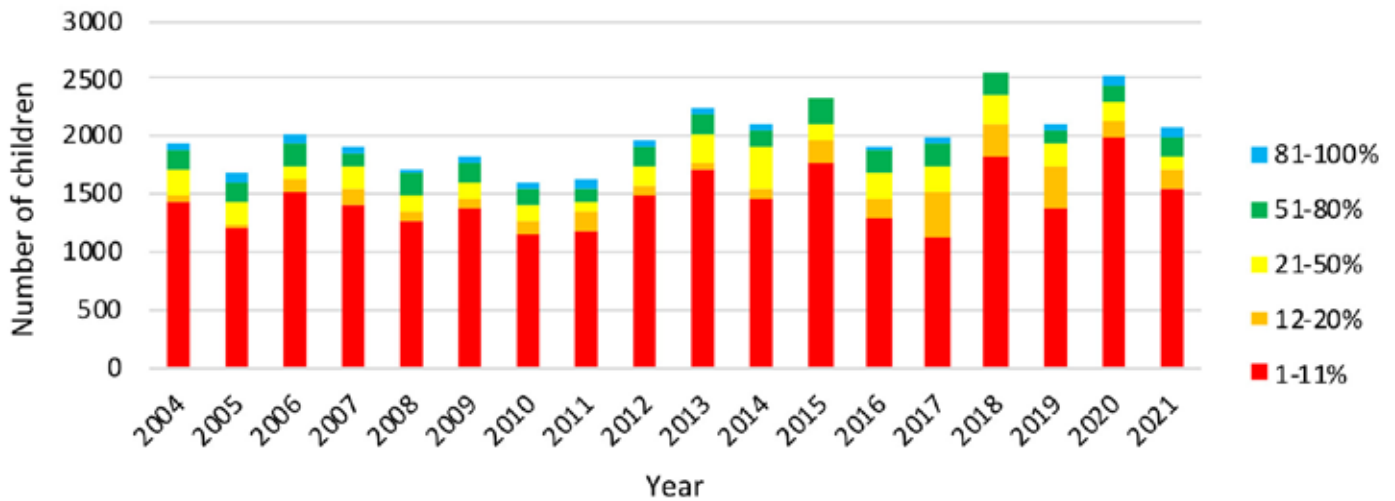
Aio e kaota mwaitia ataei aika a reirei n taabo n reirei ae a kabongana te taetae n Tokelau. N te ririki 2015, ao a rawata mwaitia ataei aika a reirei ma te anga reirei n te taetae n Tokelau e ti kabonganaki 1-11%.

Vagahau Niue



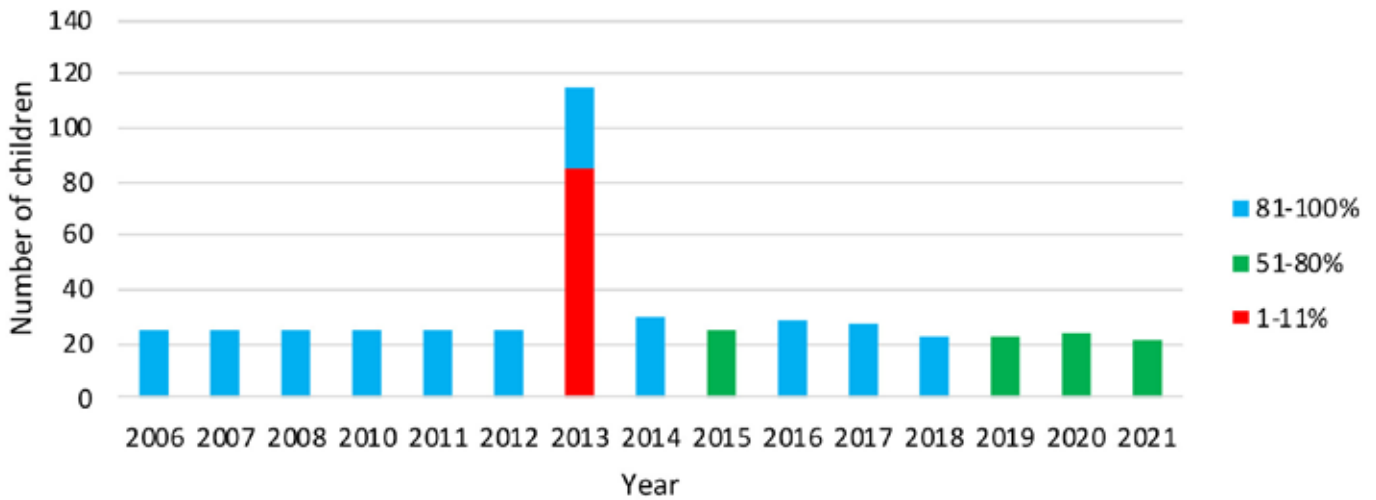
Man 2004, ao iai te bibitaki ni mwaitia ataei aika a reirei n taian reirei ae e kaboanganaki iai te taetae n Niue. N te ririki 2013, ao e noraki rawatan mwaitia ataei n taian reirei aikai, ma bon angin te anga reirei e ti kabonganaki 1-11% te taetae n Niue. E ngae ngke iai te kerikaki n te mwaiti man 2013, mwaitia ataei ae a rin n taian reirei aika a kabongana te taetae n Niue e a rikirake.

Te reo Māori Kūki 'Āirani



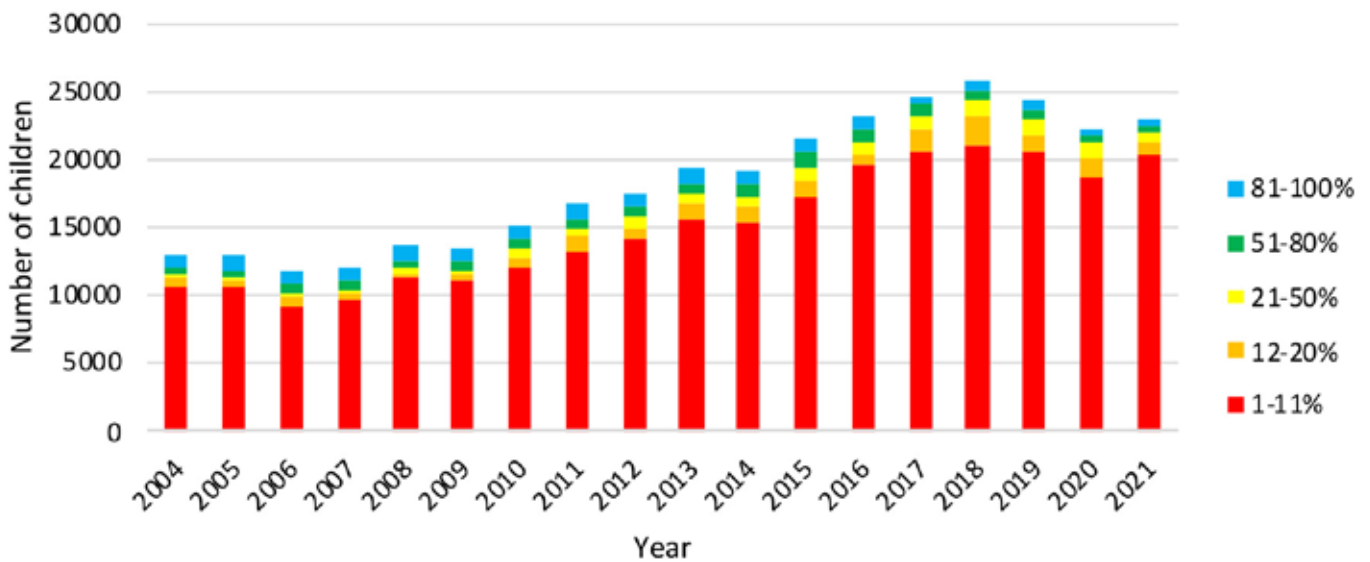
Mwaitia ataei aika a reirei n te reirei ae a kabongana te taetae ni Māori Kūki 'Āirani a nang mwaiti bwa i marenan 1,500 ao 2,000, ao tabeua ririki a kan roko n 2,500 mwaitia ataei. E ngae ngke iai teutana te kerake ni mwaitia ataei n taian reirei aikai, bon akea atakina raori bwa iraua n te katebubua aron kabonganana te taetae aio n taian reirei aikai.

Pukapuka



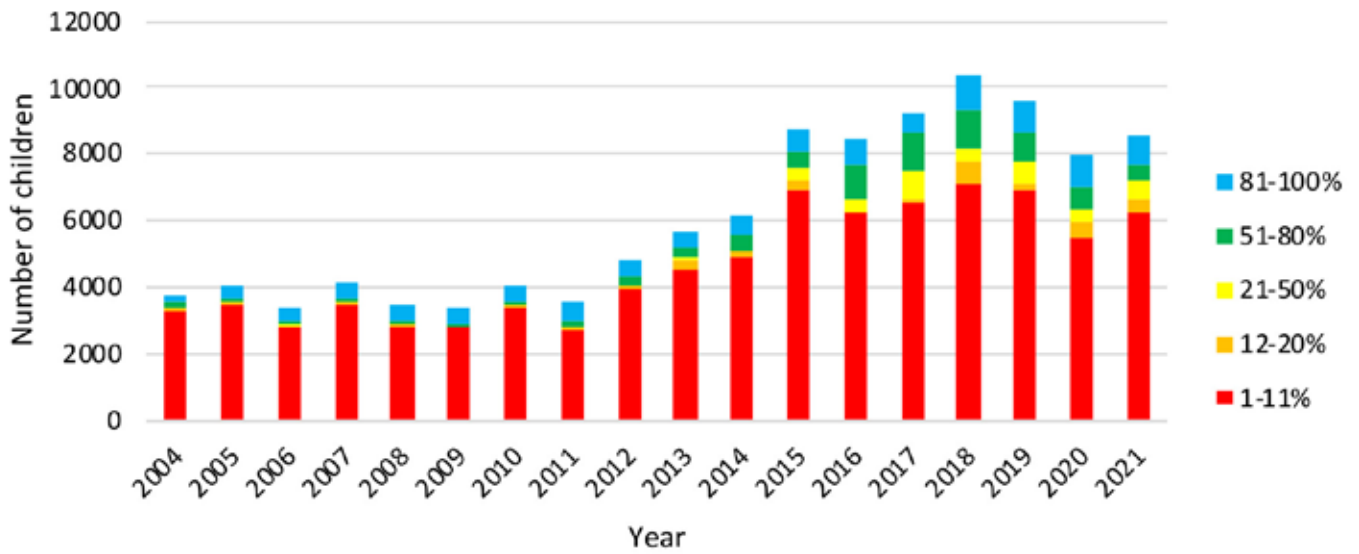
Ni kaineti ma te taibora aio, bon ti teuana te reirei i aon Pukapuka ae e kareireia e kaan 25 ataei ao e kabongana te taetae ae e riaon 50%. Iai te kerake ae e mwaitia n te ririki 2013 ma mwaitia ataei aika a reirei ae e kania 120. E nang kainanoaki riki te kakae bwa e aonga n ataki bwa tera ae e karekea te kerake ni mwaitia ataei n te ririki 2013.

Gagana Samoa



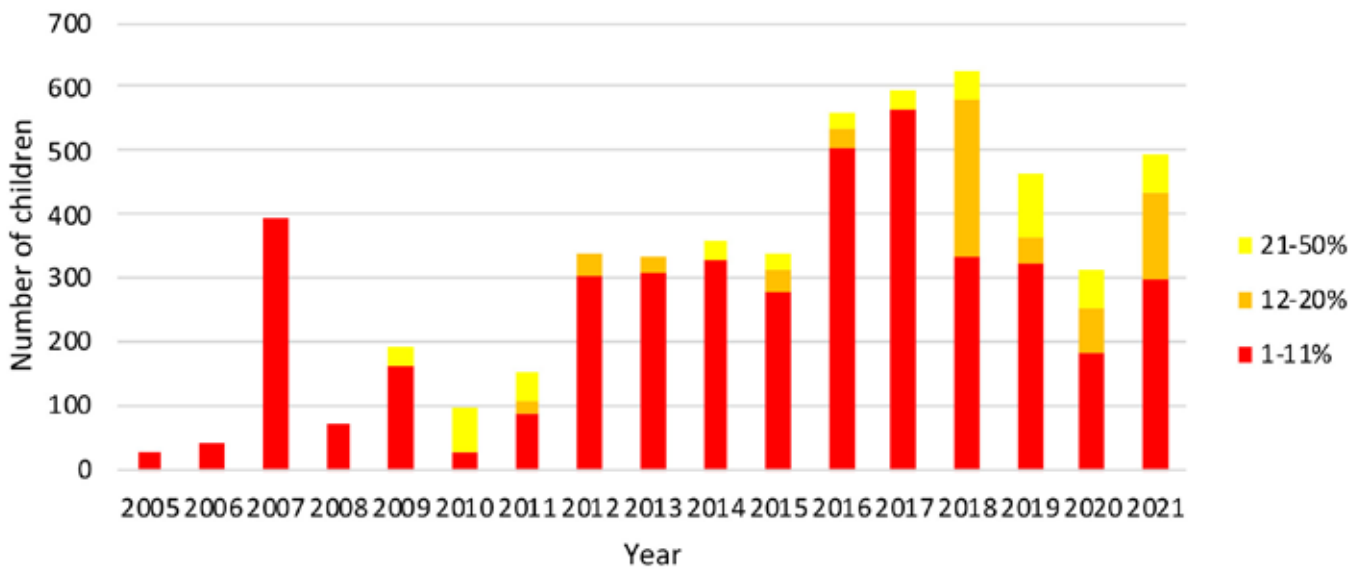
Te taibora aio e kaota keraken mwaitia ataei ae a reirei n taian reirei ae e kabonganaki iai te taetae n Samoa man 2018 ni karokoa ae e a manga noraki te kerikaki n ua te ririki 2020. Angin te kerake ni bon taian reirei ae a kabongana te taetae n Samoa ti 1-11% te tai. Mwaitia ataei aika a reirei n reirei aikai n angin te tai (n aekan Aoga Amata) e bon tiku naba n arona i nanon te tai, ti te kerake ae e uarereke n karinan tabeua ao te kerikaki ae e uarereke n akeke tabeua.

Lea faka Tonga



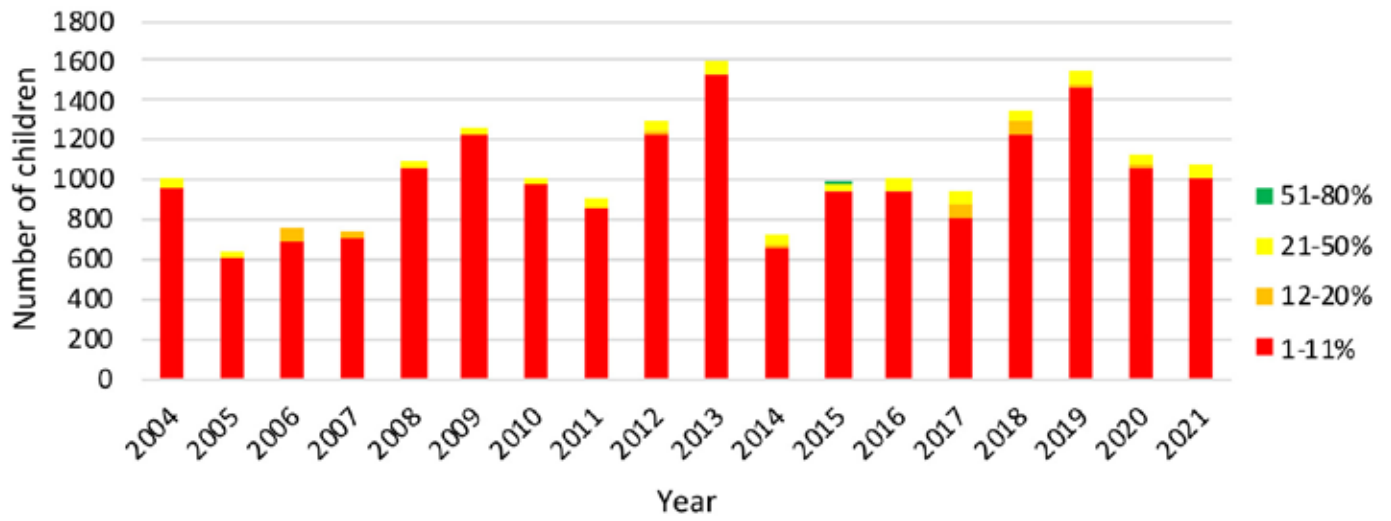
Te taibora aio e kaota te kerake ni mwaitia ataei aika a reirei n te reirei ae e kabongana te taetae n Tonga. Angia ataei a mena n taian reirei ae e ti kabonganaki iai 1-11% te taetae n Tonga, ma man te ririki 2015 ao iai te kerake n te mwaiti aio ae e riaon 50%.

Gana Tuvalu



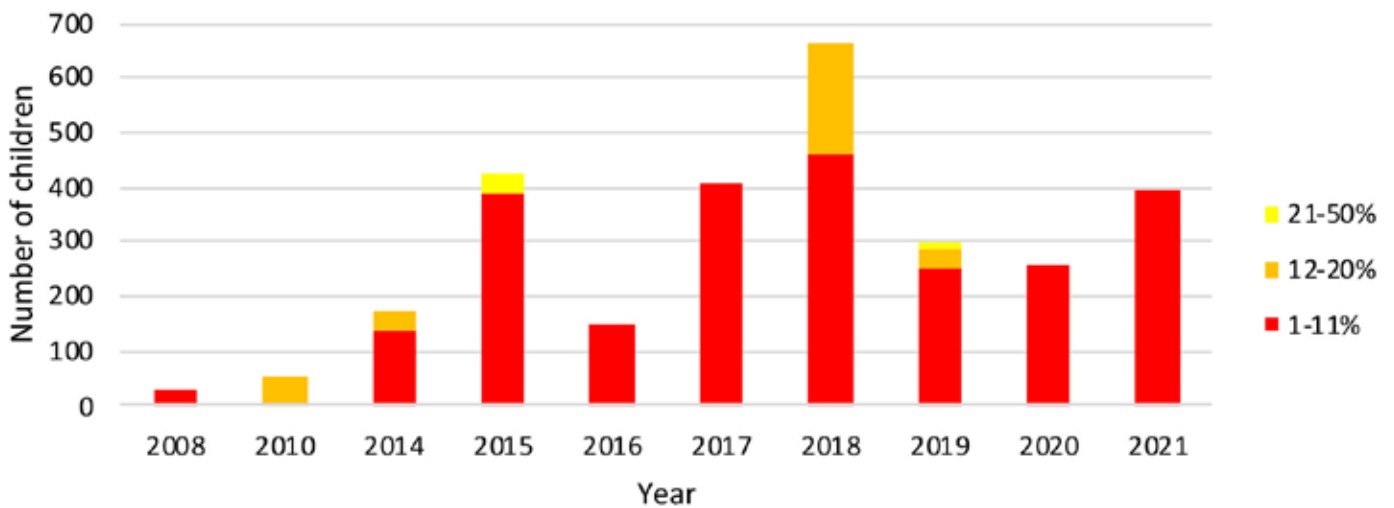
Te taibora aio e kaota kekeraken mwaitia ataei aika a reirei n te reirei ae e kabonganaki iai te taetae n Tuvalu. E ngae ngke iai te kerikaki n te mwaiti i nanon tabeua te ririki n nako, ma e a raka riki mwaitia ataei n taian reirei ae a kabongana te taetae n Tuvalu n te raka ae e riaon 12%.

Vosa Vakaviti



Te taibora aio e kaotia bwa mwaitia ataei aika a reirei n te reirei ae e kabongana te taetae ni Biiti e bibitaki i nanon te tai ao e nang korakora aio n taian reirei ae a kabongana 1-11% te taetae ni Biiti.

Te taetae ni Kiribati

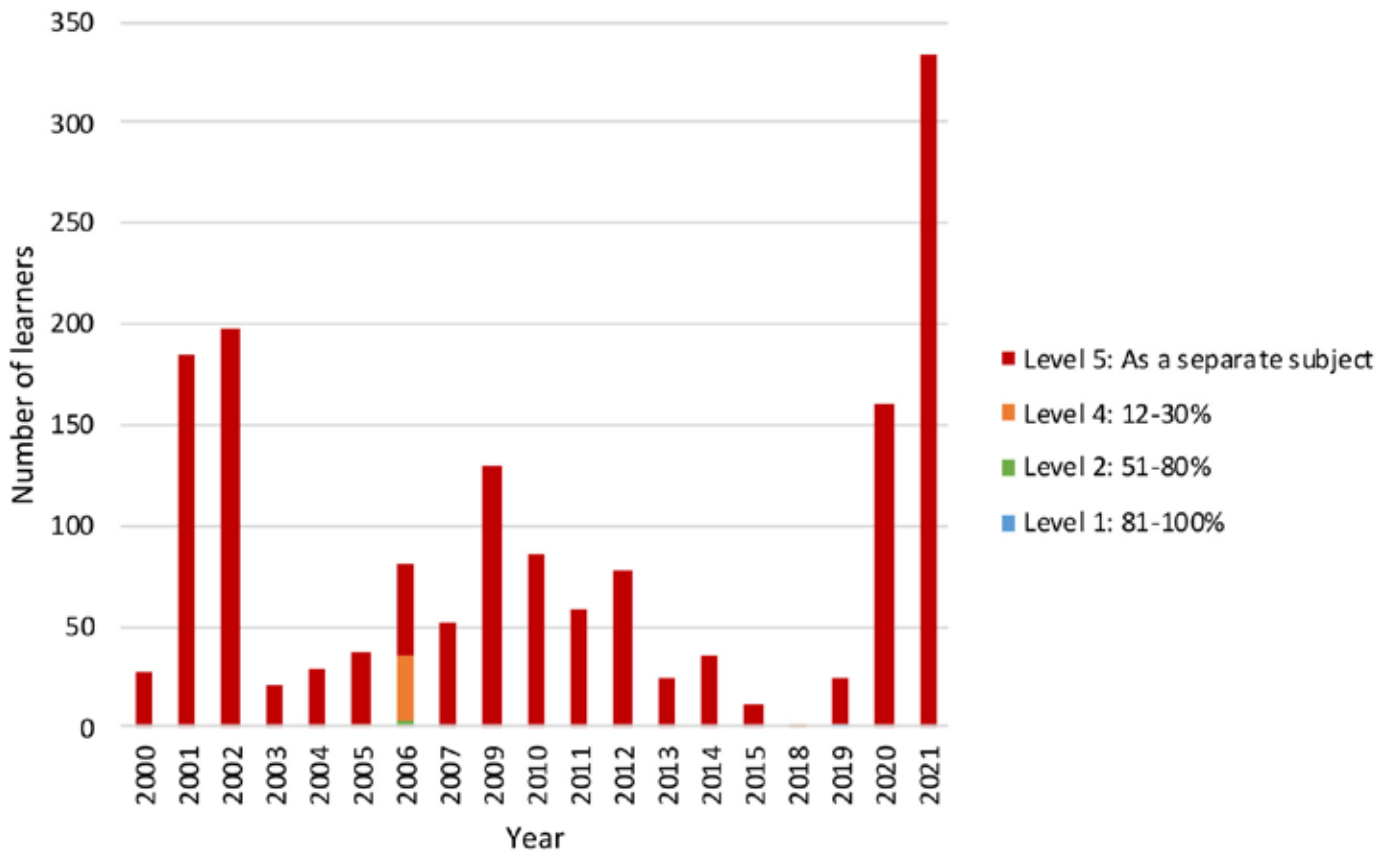


E raka riki mwaitia ataei n te reirei ae a kabongana te taetae ni Kiribati n te ririki 2021 ni kabotauaki ma te ririki 2008, ma e ngae n anne ao mwaitia ataei e bibitaki i nanon te tai. Angia ataei aikai a mena n taian reirei ae a ti kabongana iai 1-11% te taetae ni Kiribati.

Reirei

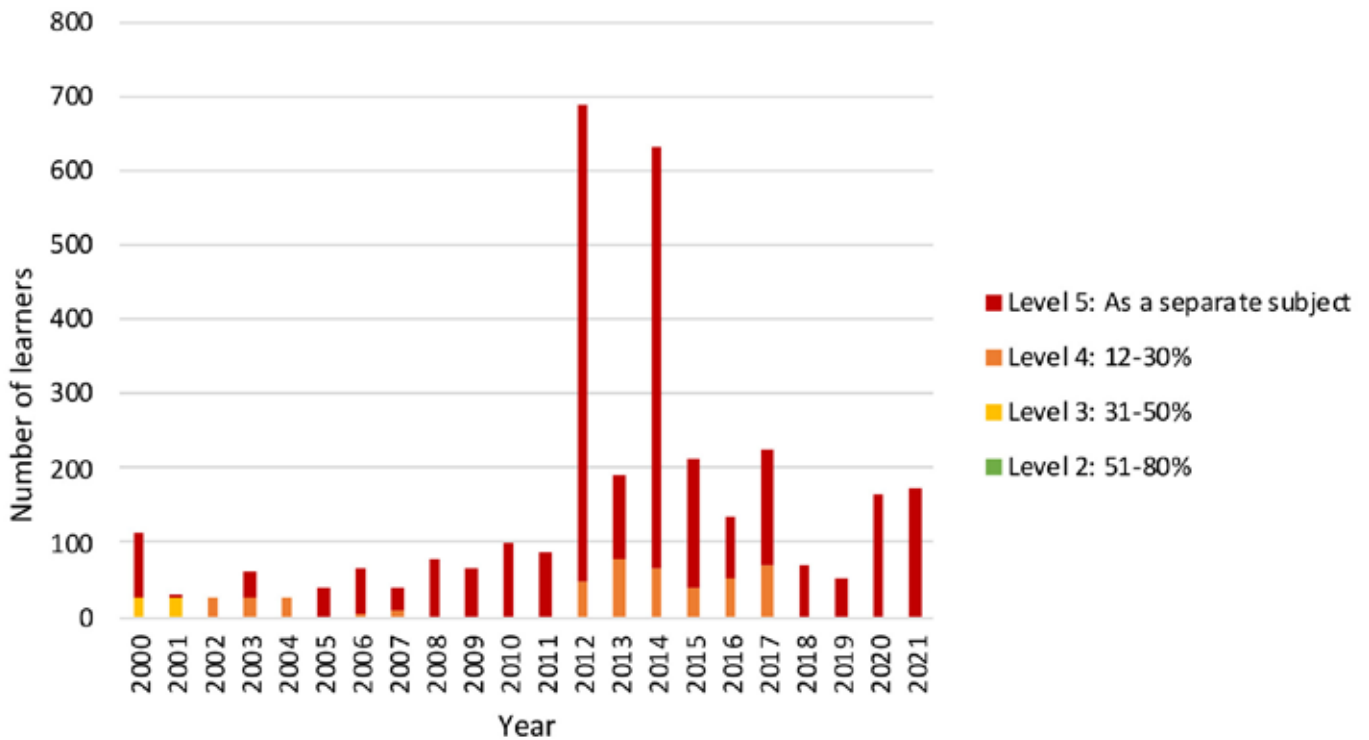
Taian tamnei aikai a kaota mwaitia ataein te reirei aika a bae arai n taetaen te Betebeke ke Taetaen te reirei aika e kamanena taetaen te Betebeke ao te imatang (bilingua) ke ae e angii iai kamanenaan taetaen te Betebeke ao teutana te Imatang (Immersion) n te mwakoro ibukin te reirei. Te kanikina (the key), e kaota kakaokoron rinanin kabonganan taian taetae i nanon te umwanreirei. N aron ae, 'Karinan 1 (Level 1): 81 – 100% bon te kabanea ni karinan ae e rietata n taetae aika uoua/tebonakina are nanona bwa taetaen te Betebeke bon ngaia ae e kabonganaki bwa te taetae ni kairiri 81 – 100% n angin te tai. Aio e kaineti nakon taian koraki (class) ake a reirei ni kamanena te taetae nakoia nake a reirei te taetae, ae e kaokoro ma naake a reirei tii i aon te taetae. N aron ae, taian koraki (class) a reireinaki atun reirei (subject) ae tao te numera ke te tiaienti n taetaen te Betebeke, ma tiaki n te taetae n Imatang. Ao n iterana are teuana, 'Karinan 5 (Level 5): e kaokoro aia bwaai aika a reirei iaona' nanona bwa a boboto aia reirei iaon reireian te Taetae nakon are a na karaoa te anga reirei aika e kamanena taetaen te Betebeke ao te imatang (bilingua) ke ae e angii iai kamanenaan taetaen te Betebeke ao teutana te Imatang (Immersion) n reirei atun reirei (subjects) ake tabeua.

Gagana Tokelau



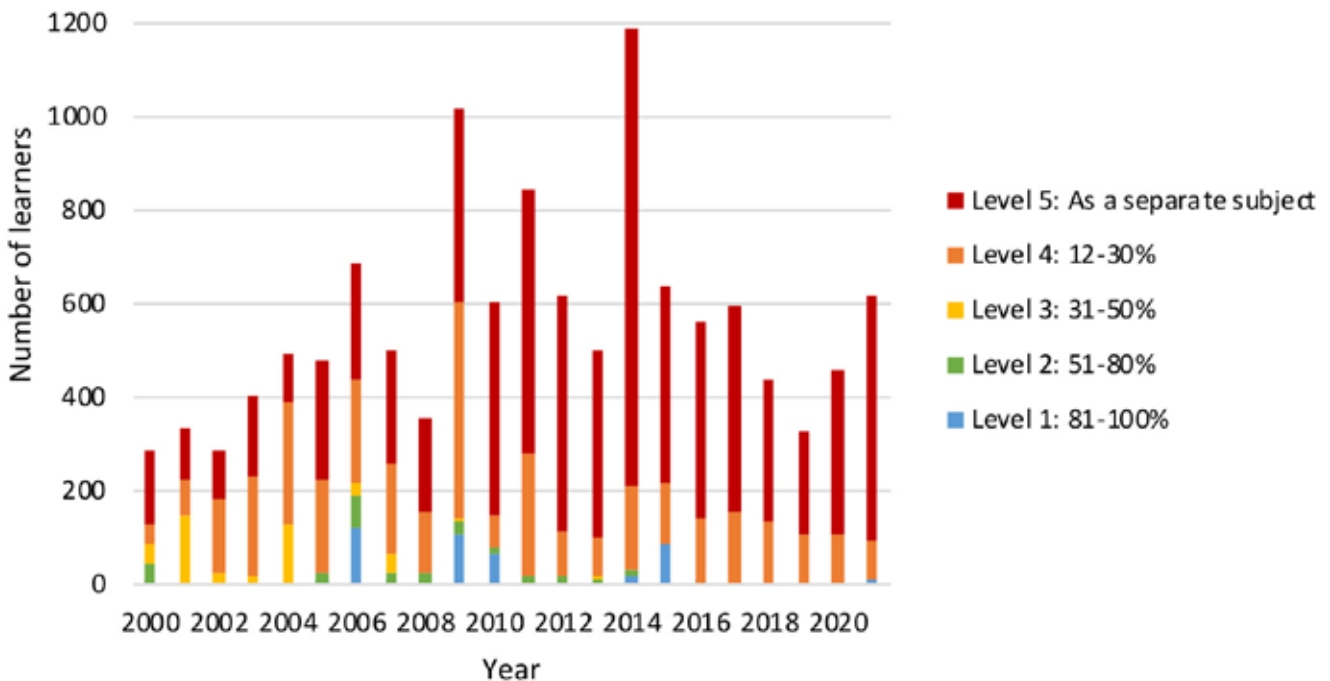
Te taibora aio e kaotia bwa te taetae n Tokelau e korakora reiakinana ni bon te subject ae e onoti, nakon are e kamanenaaki n te tabo ae e kamanena taetaen te Betebeke ao te imatang (bilingua) ke ae e angii iai kamanenaan taetaen te Betebeke ao teutana te Imatang (Immersion). Ma e ngae n anne, ao n 2006 ao iai te anga reirei ae e waakinaki ae kamanenaaki iai te gagana Tokelau ao te taetae n Imatang ma e kamanenaaki n are te kabanea n rinano (level 4) ike e kamanenaaki tii 12 - 30 te katebubua man te tai (12-30% of the time).

Vagahau Niue



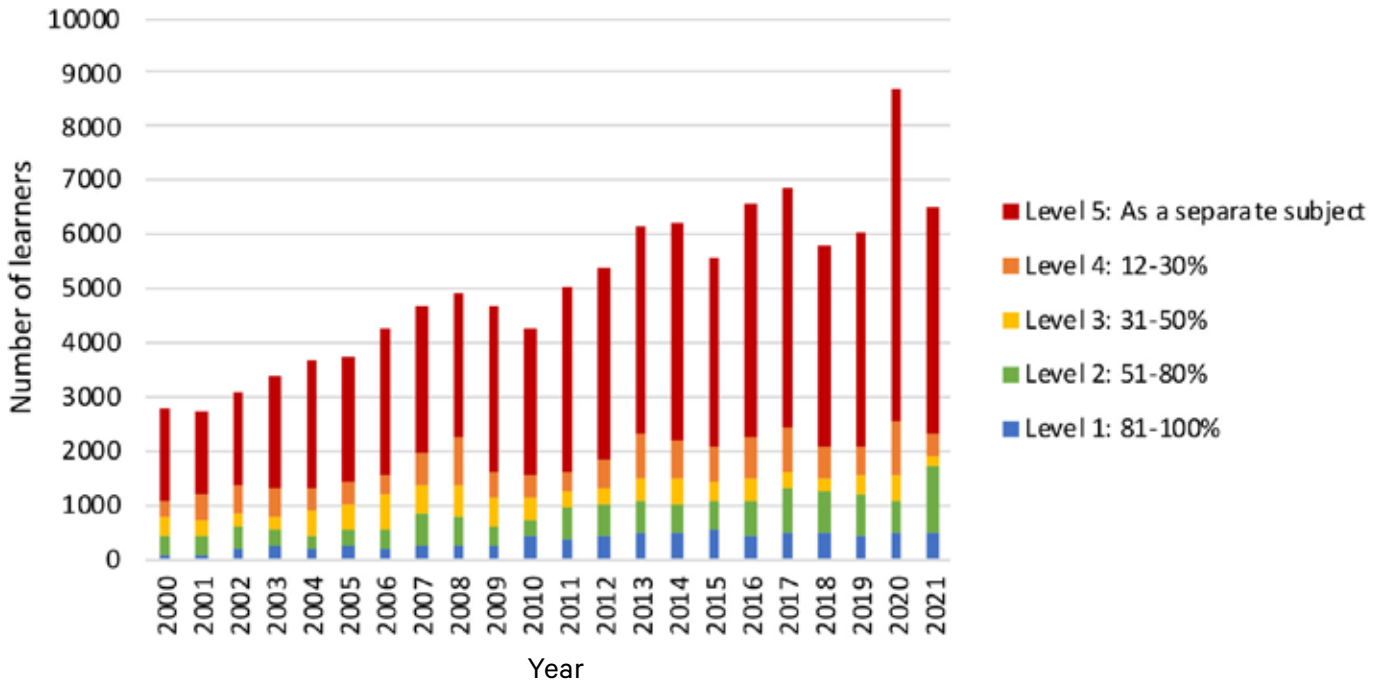
Te taibora aio e kaotia bwa e karaoaki te anga reirei n te taetae n Niue ni bon teuana te subject ae e onoti, ma ni moan 2000 ao i marenan 2012 ma 2017 ao e a mwaiti riki te reirei ae a kabongana iai uoua te taetae.

Te reo Māori Kūki 'Āirani



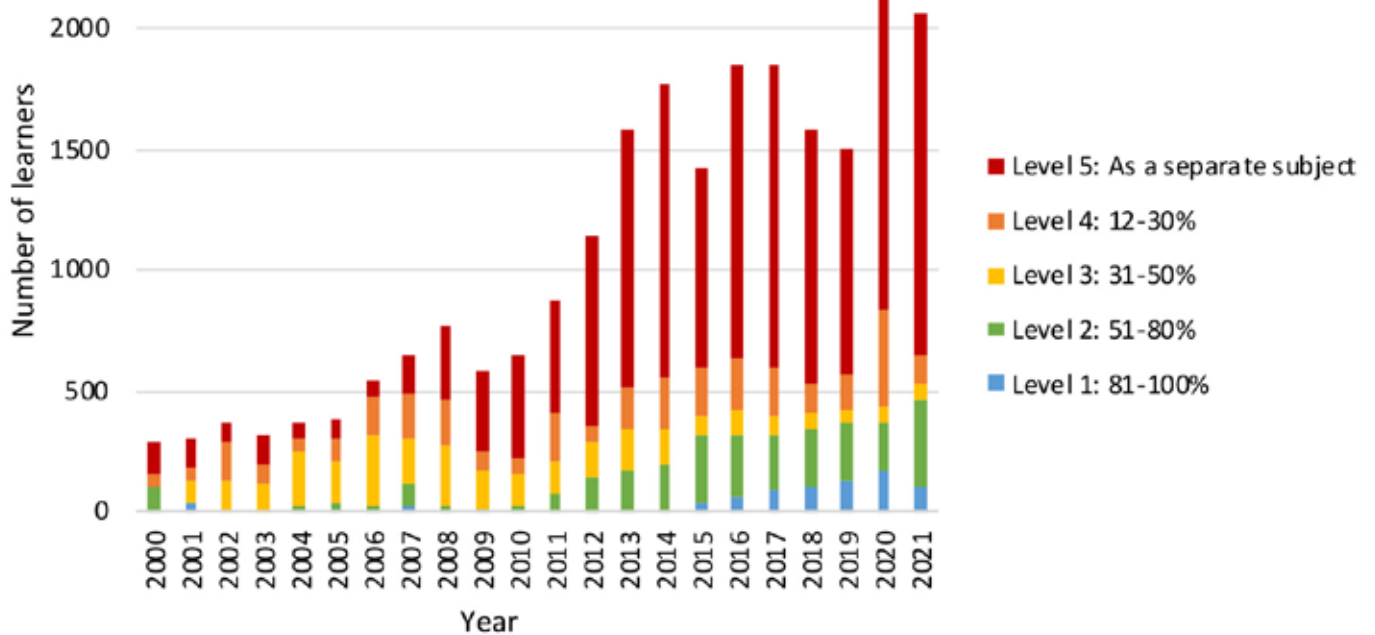
Te taibora aio e kaotia bwa e karaoaki te taetae n Māori Kūki 'Āirani – ni bon te subject ae e onoti ao iai naba rinerine (option) n reirei aika e kamanena taetaen te Betebeke ao te imatang (bilingual) ke ae e angii iai kamanenaan taetaen te Betebeke ao teutana te Imatang (Immersion). Angiin taian rinerine n are a kamanena te taetae n Betebeke ao Imatang a mena n te karinan ae e rinano (12-30% te anga reirei n te taetae n Māori Kūki 'Āirani), ma iai riki anga n anga reirei aika a manga katauraoaki riki, riki ni moan te ririki 2000, ao e a raka riki mwaitin kamanenaan te reo Māori Kūki 'Āirani (higher bilingual/immersion level). ma ni moan te ririki 2000, e a kerake riki mwaitina.

Gagana Samoa



Te taibora aio e kaotia bwa i nanon te tai ao e tabe ni kekerake kabonganana te taetae n Samoa n te subject ae e onoti ao n te rinerine (option) are uoua ke teuana te taetae ae e kabonganaki. N te ririki 2021, iai te kabanea ni birirake mwaitiia ataei n te level 1 ao 2(ike e kamanenaaki te anga reirei iai n te gagana Samoa iaon 50% te tai), n te mwaiti ae 1,700.

Lea faka Tonga



Te taibora aio e kaota te kerake ni kabonganana te taetae n Tonga n te subject ae e bon onoti ao te anga reirei ae kamanena te lea faka Tonga ma te imatang, ao e ngae n anne ao iai te keerikaaki ni mwaitia taan reirei te taetae n itera aikai i marenan 2020 ao 2021., e ngae ngke iai te kerikaki ni mwaitia ataein te reirei i marenan 2020 ao 2021.

Te Botaki ibukia kaain te Betebeke

NB: Rongorongon taetae aikai a ti anaaki man te ririki 2021.

Te taetae	Mwaitia ataein te reirei ao karinan n te reirei n te taetae
Te taetae n Pukapuka	7 ataein te reirei n te karinan 5 (aika a reirei n te taetae) n te ririki 2021
Te taetae n Tuvalu	Akea mwina ae e reke i nanon 2021
Te taetae n Rotuma	Akea mwina ae e reke i nanon 2021
Te taetae ni Biiti	20 ataein te reirei n te karinan 5 (aika a reirei n te taetae) n te ririki 2021
Te taetae ni Kiribati	15 ataein te reirei n te karinan 2 (uoua te taetae) i nanon te ririki 2021

Annex 3: Kamaiuan taian taetae n aekana nako

Babairean te taetae e na buoka karaoan taian tua ma mwakuri aika a na kainanoaki ibukin aron te taetae. Kakamwakuri aikai a na roota tein (kabonganana, ao mwaitin) ke bonganan (bonganan ao nnena ngkai) taian taetae. Taian tua i aon te taetae, n ikotaki ma taian babaire aika a karaoaki n te karinan ae e bubura (n aron te tautaeka) ke e karaoaki n te karinan ae e uarereke (n aron te mwenga).

Iai nimaua mwakorokoron (elements) i aon tuan ao babairean te taetae ae e a tia n kabonganaki ibukin aia taetae kaain te Betebeke i aon Aotearoa Nutiran- nnena, te atatai ao aron rekena, kabonganana, te ataiwai ae e kakawaki ao mwaitina. A bane n tia n ataaki aikai irouia koraki aika a rabakau taetae aika a mwaiti (linguists) ao taan babairean te taetae bwa e rang ni kakawaki ibukin kateimatoa maiuna.

Nnena (Status)

- e rekereke ma nnen te taetae irouia aomata. I aon Aotearoa, nnen (status) aia taetae kaain te Betebeke e roota aron tarakia ma kabonganakia. Taian mwakuri aika a kona n karikirakea atakin ma kakawakin aia taetae kaain te Betebeke, e na kona ni karikirakea te ae tamaroa ibukin aia taetae kaain te Betebeke bwa e na teimatoa n rikirake.

Rabakau ao karekeakina (Knowledge and acquisition)

- e rekereke ma te rabakau ae e korakora i aon taekinana, te ongora nako iai, te wareware, ao te koroboki. Taian kakamwakuri ni karikirakei aroia aomata bwa a na reirei ao n reireinia aia taetae kaain te Betebeke a kainanoaki ibukin kateimatoan aia taetae kaain te Betebeke i aon Aotearoa.

Kabonganana (Use)

- e rekereke ma aron kabonganana te taetae i nanon te reitaki. Kakabonganana aia taetae kaain te Betebeke n taabo nako e nang kakawaki ibukin kamaiuan ao kateimatoan te taetae.

Atakin baika a kakawakin (Critical awareness)

- bon atakin kakawakin te taetae ao baika a kona n reke, man rinean aron te taetae, bwa e na teimatoa. Kakamwakuri n aron atakin aia taetae kaain te Betebeke i Aoteaora. Butimaeen ae e rang kainanoaki bwa are e na manga moan kamaiuaki ao man kateimatoaki aia taetae kaain te Betebeke, n ikotaki ma te oota n taben te tautaeka, taian kaawa, ao bon aomata nako ni boutoka aia taetae kaain te Betebeke, bwa e na rikirake kabonganakina i aon Aotearoa.

Tein Rabwatan ma anuan te taetae (Corpus)

- bon kamatebwaian wakin ao tein te taetae (linguistic character te taetae, teina,) ao bongananana. Karaoana e rekereke ma te koroboki, te taratara, ao bon taetaenakina. Taian mwakuri bon boutokan karaoan taian kuramwa, taian tikitionare, booki ibukin reiakinan te koroboki, taetae ao wareware (literacy manuals) ao aron te koroboki ma te ibuobuoki ke te kaetieti ibukin katiribwarean raoi taian taeka ni boutoka kabonganana aia taetae kaain te Betebeke i aon Aotearoa.

Annex 4: Karinanin aia taetae kaain te Betebeke

Te Waaki aio, e rin iai ruaiua aia taetae kaain te Betebeke aika a boutokaki man te botaki ae Botaki ibukia kaain te Betebeke: te taetae n Tokelau, te taetae n Niue, te taetae ni Māori Kūki 'Āirani, te taetae n Samoa, te taetae n Tonga, te taetae n Tuvalu, te taetae n Biiti, te taetae n Rotuma ao te taetae ni Kiribati.

Aban te Betebeke aikai a bon kakaokoro ni baika a kainanoi, a kaokoro ni korakoraia ao ni baika a kaitarai ke aia kanganga nako. Te Waaki aio e karababa te taratara ma baika a na riai ni karaoaki, ma te karinan aio e na boutokai waaki nakon taetae aika kakaokoro rinanon Pacific Language Community Action Plans.

Aikai taian kainibaire aika a na kabonganaki ni kamatebwaia aia taetae kaain te Betebeke aika ruaiua:

- **Kairan anuam ao kabaeam n te tua:** Nnen nako aia taetae kaain te Betebeke ao tua aika a rekereke ke reitaki aika a rang nim ma Aotearoa Nutiran.
- **Kamaiuan te taetae:** Mwaitia n te katebubua aika a rabakau te taetae ao taan taetae aika ataei, mwaitin kerikakin kabonganakan te taetae, te kanganga nakon karinan n taetae ao ai bwin te Graded Intergenerational Disruption Scale (GIDS)⁹.
- **Aron tein te botanaomata:** buburan ana botannaomata Aotearoa Nutiran, mwaitia aomata aika a maeka i aon Aotearoa Nutiran, mwaitia aomata aika a bungiaiki i aon Nutiran ao mwaitia aika a rekereke ma aba aika kakaokoro (uoua akana i nano aika a karekea te bitaki n te taetae).

N taian karinan aikai, ti anga te bwi ni kaineti ma mwiin karaoan te ukeuke/tutuo (assessment). Te katoto ibukiia ake a uarereke mwaitiia aika a taetae n aia Taetae, a anganaki te bwi ae rietata riki, ao nake a rawata riki aia taan taetae n aia Taetae iaan 15 a keerikaki riki aia bwi (lower score). Turun te kara ae oti inano n te 'heat' table e kaota rakan riki te bwi.

Taian taetae ae titebo aia bwi a na botaki ni karekea teniua te karinan: '# Speakers in NZ', '% Under 15 speakers'.

'%Speakers in NZ', '# Under 15 Speakers', Language decline. N angin te tai ao aio e nang bebete atakina, e ngae n anne ao taetaen Biiti e kona n rin n te kauoua ni karinan ma taetaen Samoa ao taetaen Tonga ke a mena n te kateniua ni karinan.

E ngae n anne, ma ibukin kabotauakakin uarereken te botanaomata i Nutiran ao uarereken mwaitia taan rabakau n taetae, e raoiroi riki bwa a na kaairaki mangaai taetae aika Te Gana Tuvalu, Te Taetae ni Kiribati ao Faeang Rotuman.

	Te Gagana Tokelau	Vagahau Niue	Te Reo Māori Kūki 'Āirani	Gagana Samoa	Lea Faka Tonga	Te Gana Tuvalu	Fāeag Rotūam	Vosa Vakaviti	Te taetae ni Kiribati
Tein tuan te aba	Te tabo	Te tabo	Te tabo	Te reitaki n iraorao	Te reitaki n iraorao	Reitaki ma rimoa	Reitaki aia a boou	Reitaki ma rimoa	Reitaki aia a boou
% taan taetae i aon NZ	23%	12%	9%	50%	40%	48%	34%	24%	50%
% te roro i an 15 te ririki aika a kona te taetae	13%	7%	7%	20%	21%	25%	NA	9%	24%
Kerikakin te taetae	-14%	-11%	-7%	-9%	-16%	-14%	+5%	-3%	-6%
Nnen UNESCO	Severely endangered	Definitely endangered	Vulnerable	NA	NA	Definitely endangered	Vulnerable	NA	NA
Ana bwi GIDS	8	8	8	6	6	6/7	6/7	6/7	6
Mwaitia aomata	8,676	30,867	80,532	182,721	82,389	4,653	981	19,722	3,225
% mwaitia aomata i aon NZ (vs island)	85%	95%	82%	48%	45%	31%	NA	2%	3%
% mwaitia aika a rawata aia itera	65%	71%	57%	41%	36%	28%	65%	45%	25%
% mwaitia aika a bungiaiki i aon NZ	79%	83%	83%	67%	64%	54%	49%	41%	41%
Te bwi	42	44	40	23	27	18	18	21	13

Taabo ake a karekei rongongo mai iai (References)

- 1 Research to understand the features of quality Pacific bilingual education: Review of best practices. Stephen May, Ministry of Education (2020); Research on the social and economic value of multilingualism. Teachers of English to Speakers of Other Languages Aotearoa New Zealand (2012); May, S (2009). 'Pasifika Languages Strategy: Key Issues'. School of Education, University of Waikato; Defining positive mental wellbeing for New Zealand-born Cook Islands youth. Eliza Puna & Jemaima Tiatia-Seath (2017); 1; Tamasese K, Peteru C, Waldegrave C, Bush A. Ole Taeao Afua, the New Morning: A Qualitative Investigation Into Samoan Perspectives on Mental Health and Culturally Appropriate Services. Australian & New Zealand Journal of Psychiatry. 2005;39(4):300-309. doi:10.1080/j.1440-1614.2005.01572.x ; Māori and Pacific Peoples Co-creating research on loneliness and social isolation challenging Western perspectives in New Zealand – First presentation of findings. The Family Centre (2018); Fetui, V., & Malaki-Williams, A. M. (1996). Introduction of the Samoan language programme in New Zealand. In F. Mugler, J. Lynch (Eds.) Pacific languages in education (pp. 228-243). Suva, Fiji and Vila, Vanuatu: Institute of Pacific Studies, University of the South Pacific : Dept. of Literature and Language, University of the South Pacific ; Pacific Language Unit, University of the South Pacific; Research on the social and economic value of multilingualism. Teachers of English to Speakers of Other Languages Aotearoa New Zealand (2012).
- 2 <http://researcharchive.vuw.ac.nz/xmlui/bitstream/handle/10063/1452/thesis.pdf?sequence=1> & thesis.pdf (waikato.ac.nz)
- 3 Statement-of-Partnership-NZ-Tuvalu-_2019-2023.pdf (mfat.govt.nz)
- 4 Kiribati | New Zealand Ministry of Foreign Affairs and Trade (mfat.govt.nz)
- 5 Tuvaluan: A Polynesian Language of the Central Pacific. Niko Besnier (1999).
- 6 National EFA 2015 review in Tuvalu - UNESCO Digital Library
- 7 Te Oranga o te Reo Māori 2006 – The health of the Māori language in 2006. Te Puni Kōkiri (2008).
- 8 Language planning and policy: Factors that impact on successful language planning and policy. Tony Trinick, Stephen May & Ruth Lemon (2020).
- 9 Reversing language shift: theoretical and empirical foundations of assistance to threatened languages. Joshua Fishman (1991).



