

The Pacific Aotearoa Community Outreach Fund

Omicron Response

Purpose

- ❖ The Pacific Aotearoa Communities Outreach initiative prioritises key initiatives that have proven to be effective for Pacific communities, are scalable, and can be implemented quickly.
- ❖ Experience has shown that Pacific-led and targeted approaches delivered in collaboration by the government, Pacific providers, and community partners work best for our Pacific communities.
- ❖ This investment is about innovative, holistic, and Pacific-focused responses, allowing Pacific to prepare, respond, and rebuild in response to the broader wellbeing impacts of COVID-19, and more recently, Omicron.



Eligibility

The following criteria will be used to determine eligibility:

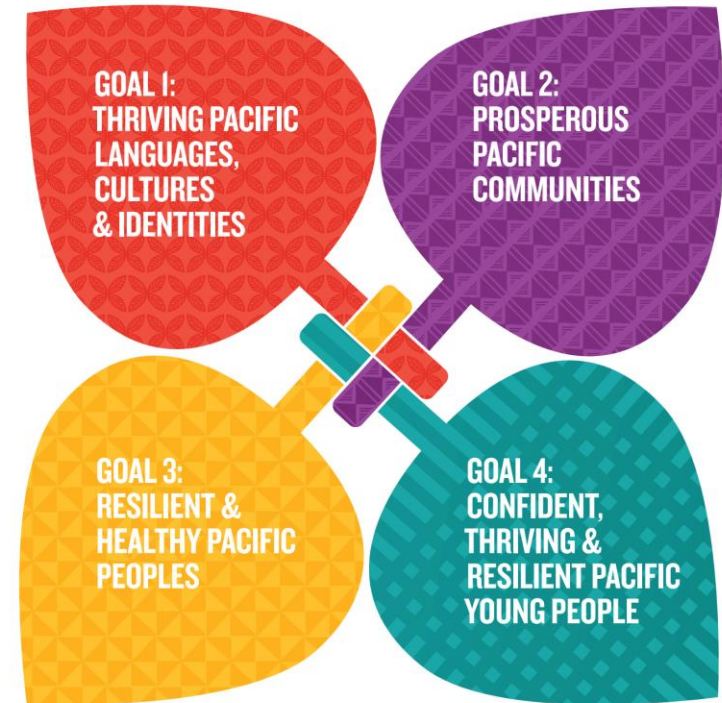
- ❖ Be a citizen or permanent resident of New Zealand
- ❖ Be of Pacific descent, or serve a Pacific audience
- ❖ Represent a registered group with the Ministry for Pacific Peoples
- ❖ Represent a Pacific owned and/or operated group or organisation
- ❖ Be able to deliver an initiative targeted at Pacific communities within the timeframe and allocated funding



Criteria

Organisations will be assessed against the following criteria;

- ❖ Alignment to the Pacific Aotearoa Lalanga Fou Goals
- ❖ Impact and the reach of the proposed initiative into our Pacific Communities to fulfil identified needs
- ❖ Cultural Competency – for Pacific; by Pacific
- ❖ Outlined Deliverables and Outcomes e.g. impact and reach



What will be funded?

Community Innovation

- ❖ Grassroots solutions that address gaps from Government funding

Wellbeing Support Services

- ❖ Self/home isolation support packs, Covid Protection Framework workshops (masks, vaccine passes, etc.)

Digital Readiness & Social Connectedness

- ❖ provision of devices, training and connectivity to enable ongoing services and gatherings

Community framework and network-building initiatives

- ❖ screening solutions for events in the community/church/sport events, etc.

Note - all initiatives funded must follow Government COVID-19 health measures for gatherings and social distancing when required. Applicants will need to consider alternative ways to run your programme such as online where possible

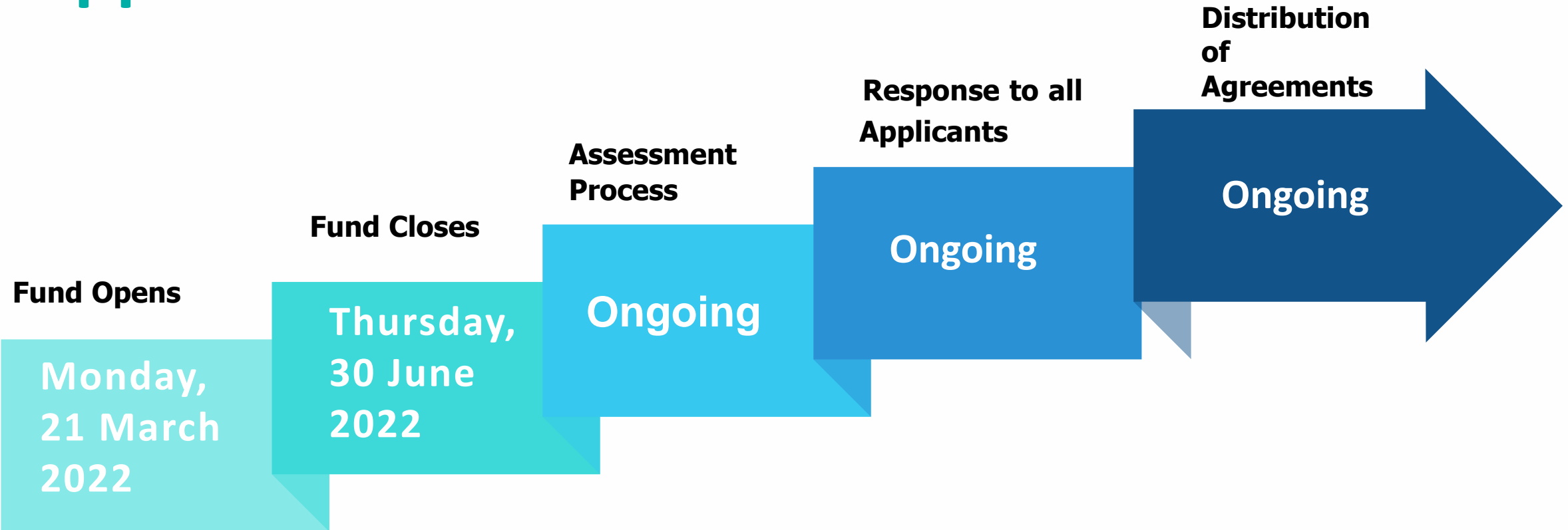


What Won't Be Funded

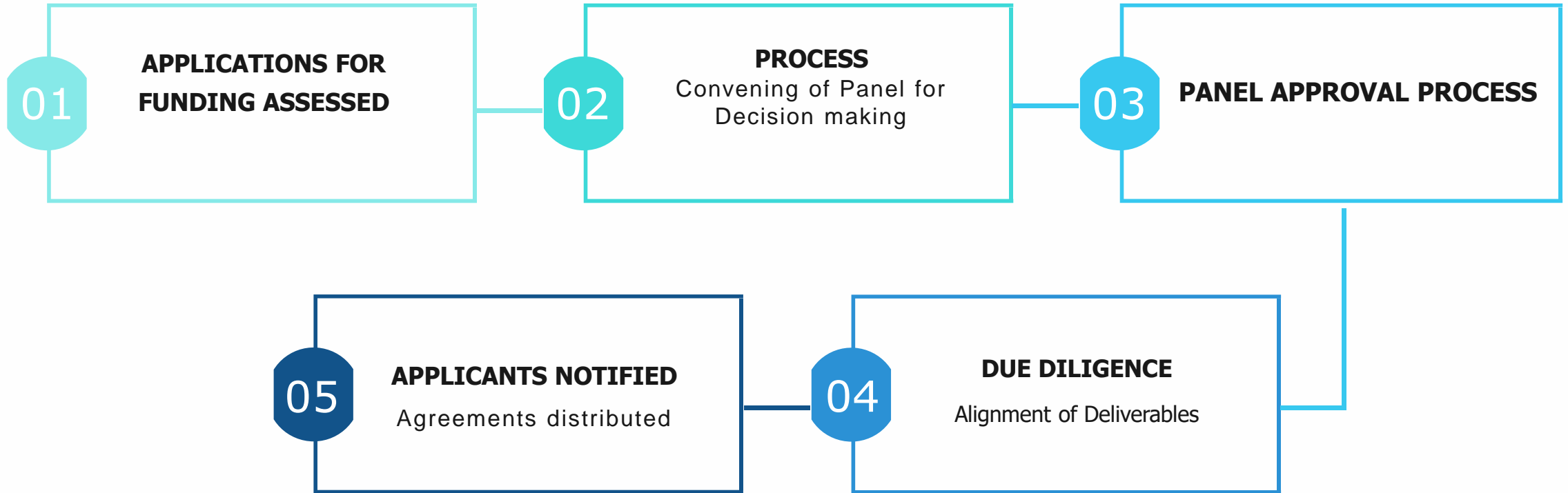
- ❖ Initiatives that only benefit or support one individual
- ❖ For-profit activities
- ❖ Initiatives that are not aligned with the priorities of this fund
- ❖ Work that has already been completed (the work on your initiative must be ongoing after the closing date for applications)
- ❖ Initiatives that are the general responsibility of other sectors (e.g. school and tertiary-based programmes which are the primary responsibility of the Ministry of Education, NZQA and TEC)
- ❖ Food or Food banks (Note: Support for these can be obtained from MSD funding or from your Pacific Social service providers e.g. Pasifika Futures, The Fono, etc.)
- ❖ Initiatives and activities delivered solely overseas including the New Zealand realm countries
- ❖ Debt repayment or debt servicing
- ❖ Renovation or remediation of commercial buildings
- ❖ Research and fact-finding
- ❖ Retrospective funding



Application Process



Assessment Process



Q & A

Visit www.mpp.govt.nz

OR

For any further support, please contact your Regional Community Connections team:

* NORTHERN – northern@mpp.govt.nz

* CENTRAL – central@mpp.govt.nz

* SOUTHERN – southern@mpp.govt.nz

Alternatively, you can contact the Community Initiatives Unit at:

fundhelp@mpp.govt.nz

FAQs about the Pacific Aotearoa Community Outreach - Omicron Response Fund

Below are some common questions asked about the Pacific Aotearoa Community Outreach - Omicron Response Fund. If you have a question not listed here, please email fundhelp@mpp.govt.nz.

Frequently asked questions

Q1. How do I apply for funding?

Q2. When do applications close?

Q3. What's funded? What's not funded?

Q4. How much funding is available?

Q5. Is there specific funding for churches and groups?

Q6. Can we apply if we are not a registered charity?





Ministry for
**Pacific
Peoples**

Te Manatū mō ngā Iwi o te Moana-nui-ā-Kiwa